

## Parks Committee Agenda

Jefferson County

Date: Monday, August 15, 2022

Time: 9:00 a.m.

Room: 202

Committee Members: Joan Callan, Walt Christensen, Anthony Gulig, Jeff Johns, Cassie Richardson

Videoconference OR  
Jefferson County Courthouse  
311 S. Center Ave, Rm 202  
Jefferson, WI 53549

Join Zoom Meeting

<https://us06web.zoom.us/j/81764690750?pwd=TG9nUERZcnNRRVRoeHp5eHVZMVV1dz09>

Meeting ID: 817 6469 0750

Dial by your location

Passcode: 369458

+1 312 626 6799 US (Chicago)

1. Call to order
2. Roll call (establish a quorum)
3. Certification of compliance with the Open Meetings Law
4. Approval of the agenda
5. Approval of Parks Committee Minutes for July 5, 2022
6. Communications
7. Public Comment (Members of the public who wish to address the Committee on specific agenda items must register their request at this time)
8. Update on Miljala Shores Project adjacent to Korth Park – Marissa Ullman JC LWCD
9. Update and Discussion on Interurban Trail Project Phase I, II, and III
10. Discussion and Possible Action on JIT Phase III Design and Engineering Proposal
11. Discussion and Possible Action on renewing contract with Hoard’s Dairyman for Carnes Park North
12. Discussion and Possible Action on Contract for the Surf Shack Kayak and Paddle Board Rentals in JC Parks
13. Discussion and possible action on 2023 Parks Fee Schedule (Shelters, Dog Tags, Boat Launches, Primitive Campsites, special use permits)
14. Update and Discussion on Flood Mitigation Property Lease Program
15. Update and Discussion on Brew With A View Fundraising to Date
16. Discussion and possible action on Special Use Permits Issued
17. Update and Discussion on 2022 Budget
18. Update and Discussion on 2023 Budget
19. Update on Historic Sites Preservation Committee
20. Next Scheduled Meetings per the 2022 Proposed Meeting Schedule
  - September 1, 2022
  - October 6, 2022
  - November 3, 2022
  - December 1, 2022
21. Adjourn

A Quorum of any Jefferson County Committee, Board, Commission or other body, including the Jefferson County Board of Supervisors, may be present at this meeting.

Individuals requiring special accommodations for attendance at this meeting should contact the County Administrator 24 hours prior to the meeting at 920-674-7101 so appropriate arrangements can be made.

## Parks Committee Minutes

Date: Tuesday, July 7, 2022

Time: 9:00 a.m.

Jefferson County Courthouse, Rm 202 and virtual via Join Zoom Meeting

<https://us06web.zoom.us/j/81764690750?pwd=TG9nUERZcnNRRRVRoeHp5eHVZMVV1dz09>

### 1. Call to order

Christensen called the meeting to order at 9:00 am

### 2. Roll call (establish a quorum)

Members Present: Callan, Christensen, Gulig, Johns

Members via Zoom: Richardson

Members Absent: None

Staff Present: Wiesmann, Klement, Westphal, Ward, Udovich

Others Present via Zoom: Fuller, DeVoe, Cicero

### 3. Certification of compliance with the Open Meetings Law

Westphal confirmed compliance

### 4. Approval of the agenda

Agenda approved as written

### 5. Approval of Parks Committee Minutes for June 6, 2022

Gulig/Richardson motion to approve the minutes. Motion passed 5/0.

### 6. Communications

In packet

### 7. Public Comment (Members of the public who wish to address the Committee on specific agenda items must register their request at this time)

None

### 8. Discussion and Possible Action on Special Use Permit Request – Onewheel Enduro Event @ Glacial River Mountain Bike Park

Wiesmann – Eric Seaman not present.

Johns – motion to approve Wiesmann- with caveat- with helmets. Motion to allow by Christenson, Callan 2<sup>nd</sup>.

Event approved one time only with helmets

### 9. Update and Discussion on Proceeds from 2022 Brew with a View fundraiser

Wiesmann – May raised 4,687, June 4, 900.50, 50/50 raised 782.00

### 10. Discussion and Possible Action on Extension of Existing Farm Lease (Kemmeter Farm/Dorothy Carnes Park)

Wiesmann – ask to go out for bid for additional 3 years of land lease, have had staffing shortages.

Johns – wants to approve for a few more years

Callan – curious of farming practices

Johns made a motion to move forward with looking over lease for another 3 years, Callan 2<sup>nd</sup>. Motion Passed 5/0

11. Discussion and Possible Action on Renewal of Class B Raffle License

Gulig motion to approve, callan 2<sup>nd</sup>

motion approved as written 5/0

12. Update and Discussion on Flood Mitigation Property Lease Program

Ward – draft a license and move forward with who’s interested in licensing these properties

Wiesmann – need verification on how properties were purchased

No action taken.

13. Discussion and Possible Action on Amending the Jefferson County Parks Ordinance including, but not limited to, making Jefferson County Flood Mitigation Properties subject to the Parks Ordinance, after hours use, dogs on leash, camping, fireworks, firearms, hunting, restrictions for motorized vehicles off roads or on designated trails.

Gulig motion to approve, 2<sup>nd</sup> from Callan

Gulig motioned to amend ordinance to prohibited conceal carry in the county parks Callan 2<sup>nd</sup> – strike/modify concealed carry, Gulig to remove concealed carry weapons

Amendment approved

Wiesmann – noted this has been discussed in the past and from recollection that it was not legal to prohibit the conceal to carry.

Ward – local governments cannot prohibit concealed carry firearms

Ward - Amendment to motion be indefinitely postponed

Richardson motion to approve postpone/ Johns 2<sup>nd</sup>

Motion passes 4/1

Original motion to amend ordinance to include flood mitigation properties motioned by Christensen/ 2<sup>nd</sup> by Johns

Motion passes 5/0

14. Discussion and Possible Action on Amending the Jefferson County Parks Ordinance to Include Language Governing the use of E-bikes and other Electric Vehicles on Jefferson County Bike Trails

Some concern regarding safety as it relates to speed.

Gulig – Favor of allowing class I

Johns motion to postpone indefinitely Richardson 2<sup>nd</sup>

15. Update and Discussion on Interurban Trail Project Phase I, II, and III

Phase I: construction is completed, trail is open.

Phase II: construction is in full swing. Completion is anticipated by 10/1/2022.

Phase III:

16. Discussion and Possible Action on Selection of Qualified Firm Submission to Request for Qualifications for Engineering of Interurban Trail Phase III

Wiesmann – review of initial qualifications, only 2 firms responded KL engineering was the most highly qualified and recommended for selection.

Gulig motion to approve allowing parks dept staff to select engineering firm

Callan 2<sup>nd</sup> to approve

Motion approved.

17. Update and Discussion on Support from Rock Lake Improvement Association for the Marsh Lake Access Property Acquisition

Wiesmann – noted that Rock Lake Improvement Association supports the acquisition.

No action taken

18. Review of Monthly Financial Reports

Wiesmann – no new request at this time. Short staff = savings. Increase in fuel prices was not anticipated.

19. Next Scheduled Meetings per the 2022 Proposed Meeting Schedule:

- August 1, 2022
- September 1, 2022
- October 6, 2022
- November 3, 2022
- December 1, 2022

20. Adjourn

Gulig/Johns to adjourn at 10:36 am. Motion passes 5/0.

FRIENDS OF ROSE LAKE/CARNES PARK Meeting July 19, 2022

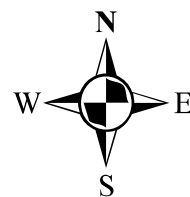
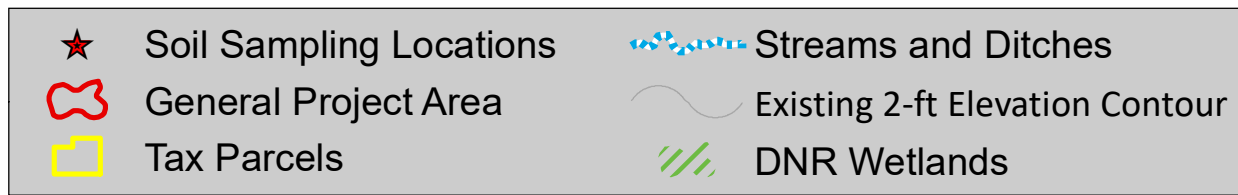
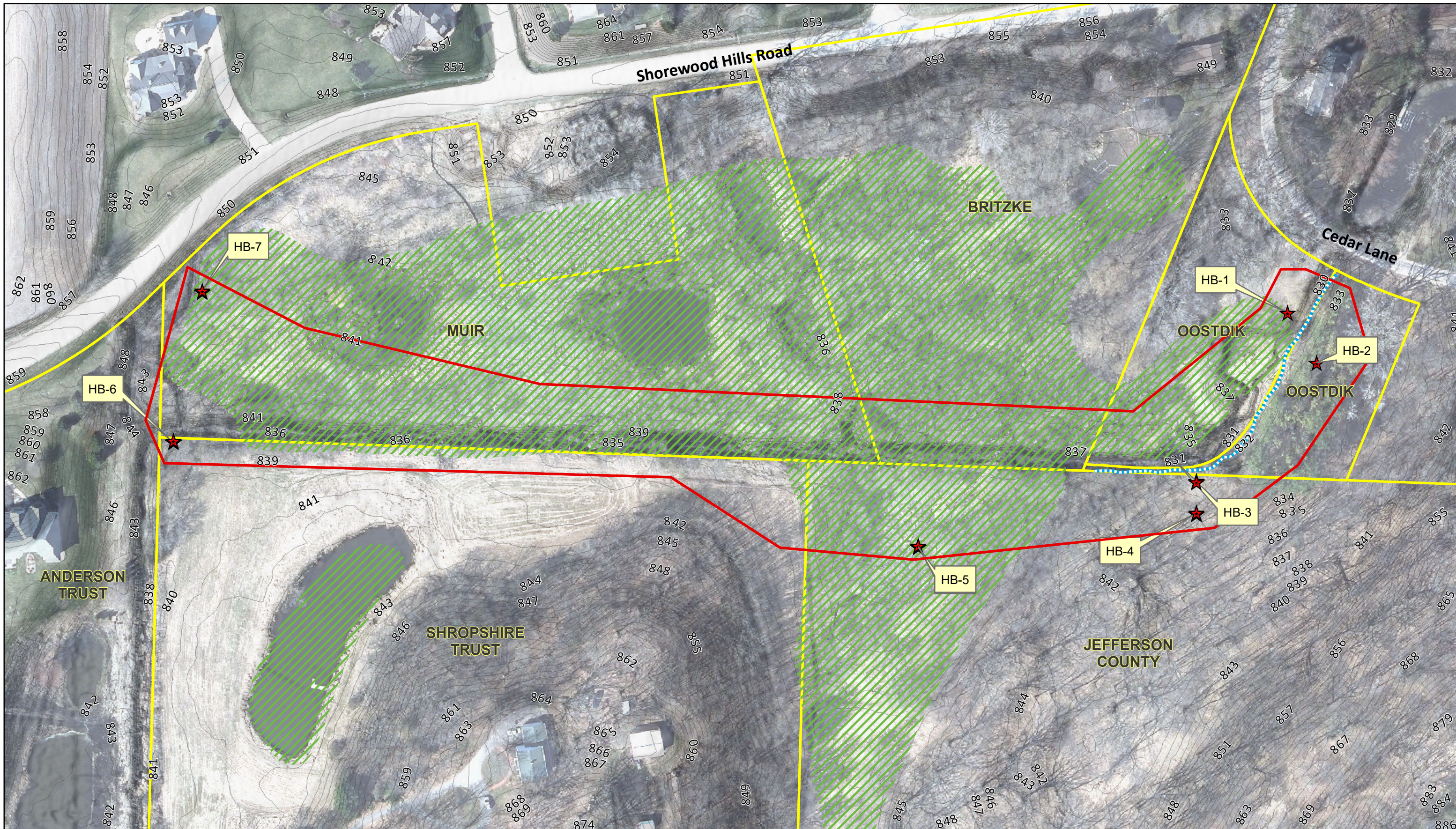
NOTE: Next meeting will be Tuesday, August 16, 2022, 6 p.m, at Carnes West shelter. All welcome.

The Fort Farmers Market booth on Saturday, July 16, went well, with Fort High School's collection of some larger birds being displayed. A good number of adults and children visited the booth. Our mission was to support Fort Atkinson as a Bird City, educate on birds and pollinators (with posters and handouts), plus to get out the word about Jefferson County's 22 parks. The Fort Fort Atkinson Chamber of Commerce provided a tent for us on a misty, foggy morn'. Thanks much.

Monitoring bluebirds for the Bluebird Restoration Association has had some good results. At Jones Lane (Carnes East), we had one batch fledge and now the same nest box has a second nest started. At the SW prairie at Carnes West, we had a successful fledge. Several tree swallows had success also. House wrens now have a few nests.

Do you know of the Carnes trails and parking off of Hoard Road, near to Hwy. 12? A former duck blind on the trail is being reworked to be a viewing deck.

It was noted that the kestrel box off Jones Lane (Carnes East) had four chicks. They have been banded. Other notes: bluebirds love meal worms; the Merlin app by Cornell University is great; see great blue herons while kayaking along the Bark River; the library box at Carnes West's deck has some copies of "Bird Watcher's Digest" to take or borrow.



1 inch = 150 feet

**PROJECT LAYOUT:**  
**Rock Lake Improvement Assoc.**  
**Proposed Ditch Stabilization & Marsh Restoration**

July 11, 2022

Figure C2

ENGINEERING SERVICES CONTRACT  
 BETWEEN JEFFERSON MUNICIPALITY (MUNICIPALITY)  
 AND KL ENGINEERING, INC. (CONSULTANT) FOR  
 JEFFERSON COUNTY INTERURBAN TRAIL PHASE 3  
 (CTH F TO MUNICIPALITY LINE)  
 NON HIGHWAY  
 JEFFERSON COUNTY

This CONTRACT made and entered into by and between the MUNICIPALITY and the CONSULTANT provides for those SERVICES described in the Scope of Services and Special Provisions and is generally for the purpose of providing the SERVICES solicited by the MUNICIPALITY with a local Request for Qualifications for pathway design services for the Jefferson County Interurban Trail. This Qualification Based Selection was made based on the CONSULTANT’S Notice of Interest response and any interviews conducted.

The MUNICIPALITY representative is: Kevin Wiesmann, Parks Department Director, Jefferson County Courthouse, Rm. 204, 311 South Center Ave., Jefferson, WI 53549; [KevinW@jeffersoncountywi.gov](mailto:KevinW@jeffersoncountywi.gov), (920) 674-7261.

The CONSULTANT representative is: Lynda Fink, PLA, Project Manager, whose work address, email address and telephone number are W175N11081 Stonewood Dr Ste 104, Germantown, WI 53022; [lfink@klengineering.com](mailto:lfink@klengineering.com); (608) 663-1218.

The CONSULTANT SERVICES will be completed by March 31, 2024.

**BASIS OF PAYMENT**

Compensation for Authorized SERVICES provided by the CONSULTANT under terms of the CONTRACT shall be for an amount not to exceed \$214,958.50.

Compensation for If Authorized SERVICES provided by the CONSULTANT under terms of the CONTRACT shall be for an amount not to exceed \$4,371.00.

Compensation for all SERVICES provided by the CONSULTANT under terms of the CONTRACT shall be for an amount not to exceed \$219,329.50.

This CONTRACT incorporates and the parties agree to the General Terms and Conditions of the Engineering Services, which are annexed and made a part of this CONTRACT, consisting of 1 page.

This CONTRACT incorporates all of the MANUALS defined in the CONTRACT. The parties also agree to all of the Special Provisions which are annexed and made a part of this CONTRACT, consisting of 8 pages.

Nothing in this CONTRACT accords any third party beneficiary rights whatsoever on any non-party that may be enforced by any non-party to this contract.

For the CONSULTANT

For the MUNICIPALITY

By: \_\_\_\_\_

By: \_\_\_\_\_

Title: \_\_\_\_\_

Title: \_\_\_\_\_

Date: \_\_\_\_\_

Date: \_\_\_\_\_

**KL ENGINEERING, INC.**  
**General Terms and Conditions of the Engineering Services**

1. KL Engineering, Inc. will begin engineering services upon written authorization to proceed. Receipt of a signed contract will be considered written authorization. For projects requiring phased services a written authorization of approval of the prior phase and notice to proceed on the subsequent phase must be received prior to commencement of services. Phases, when applicable, shall be divided into study and report phase, preliminary design phase, final design phase and construction phase.
2. KL Engineering, Inc. will bill the Jefferson County monthly with net payment due in thirty (30) days. Past due balances shall be subject to an interest charge at a rate of 1½% per month. In addition, KL Engineering, Inc., may after, giving seven (7) days' written notice, suspend service under any agreement until Jefferson County has paid in full all amounts due for services rendered and expenses incurred, including the interest charge on past due invoices.
3. The quoted fees and scope of engineering services constitute the estimate of the fees and tasks required to perform the services as defined. This agreement, upon execution by both parties hereto, can be amended only by written instrument signed by both parties. For those projects involving conceptual or process development service, activities often cannot be fully defined during initial planning. As the project progresses, facts uncovered may reveal a change in direction which may alter the scope. KL Engineering, Inc., will promptly inform Jefferson County in writing of such situations so that changes in this agreement can be made as required.
4. Costs and schedule commitments shall be subject to change for delays caused by the Owner's failure to provide specified facilities or information or for delays caused by unpredictable occurrences including, without limitation, fires, floods, riots, strikes, unavailability of labor or materials, delays or defaults by suppliers of materials or services, process shutdowns, acts of God or the public enemy, or acts or regulations of any governmental agency. Temporary delays of services caused by any of the above which result in additional costs beyond those outlined may require renegotiation of this agreement.
5. KL Engineering, Inc., will maintain insurance coverage for: Worker's Compensation, General Liability, Auto Liability, and Professional Liability. KL Engineering, Inc., will provide information as to specific limits upon written request. If Jefferson County requires coverages or limits in addition to those in effect as of the date of the agreement, premiums for additional insurance shall be paid by Jefferson County. The liability of KL Engineering, Inc., to Jefferson County for any indemnity commitments, or for any damages arising in any way out of performance of this contract is limited to such insurance coverages and amounts which KL Engineering, Inc., has in effect.
6. Jefferson County shall indemnify and hold harmless KL Engineering, Inc. from and against all judgments, losses, damages, and expenses (including attorney fees and defense costs) to the extent such judgments, losses, damages, or expenses are caused by any negligent act, error, or omission of Jefferson County or any person or organization for which Jefferson County is legally liable. KL Engineering, Inc. shall indemnify and hold harmless Jefferson County from and against all judgments, losses, damages, and expenses (including attorney fees and defense costs) to the extent such judgments, losses, damages, or expenses are caused by any negligent act, error, or omission of KL Engineering, Inc. or any person or organization for which KL Engineering, Inc. is legally liable. Upon completion of all Services, obligations, and duties provided for in this Agreement, or in the event of termination of this Agreement for any reason, the terms and conditions of this Article shall survive.
7. In the event of a dispute between KL Engineering, Inc. and Jefferson County arising out of or related to this Agreement, the aggrieved party shall notify the other party of the dispute within a reasonable time after such dispute arises. If the parties cannot thereafter resolve the dispute, each party shall nominate a senior officer of its management to meet to resolve the dispute by direct negotiation or mediation. Should such negotiation fail to resolve the dispute, KL Engineering, Inc. and Jefferson County agree that all disputes between them arising out of or relating to this Agreement shall be submitted to non-binding mediation unless the parties mutually agree otherwise. During the pendency of any dispute, the parties shall continue diligently to fulfill their respective obligations hereunder.
8. Termination of this agreement by Jefferson County or KL Engineering, Inc., shall be effective upon seven (7) days' written notice to the other party. The written notice shall include the reasons and details for termination. KL Engineering, Inc., will prepare a final invoice showing all charges incurred through the date of termination; payment is due as stated in paragraph 2. If Jefferson County violates the agreements entered into between KL Engineering, Inc., and Jefferson County or if Jefferson County fails to carry out any of the duties contained in these terms and conditions, KL Engineering, Inc., may upon seven (7) days' written notice, suspend services without further obligation or liability to Jefferson County unless, within such seven (7) day period, Jefferson County remedies such violation to the reasonable satisfaction of KL Engineering, Inc.
9. Reuse of any documents and/or engineering services pertaining to this project by Jefferson County or extensions of this project or on any other project shall be at the Owner's sole risk. Jefferson County agrees to defend, indemnify, and hold harmless KL Engineering, Inc., from all claims, damages, and expenses including attorneys' fees and costs arising out of such reuse of the documents and/or engineering services by Jefferson County or by others acting through Jefferson County.
10. KL Engineering, Inc., will provide engineering services in accordance with generally accepted professional practices. KL Engineering, Inc., does not make any warranty or guarantee, expressed or implied, nor have any agreement or contract for services subject to the provisions of any uniform commercial code. Similarly, KL Engineering, Inc., will not accept those terms and conditions offered by Jefferson County in its purchase order, requisition, or notice of authorization to proceed, except as set forth herein or expressly agreed to in writing. Written acknowledgment of receipt, or the actual performance of services subsequent to receipt of such purchase order, requisition, or notice of authorization to proceed is specifically deemed not to constitute acceptance of any terms or conditions contrary to those set forth herein.
11. KL Engineering, Inc., intends to serve as Jefferson County's professional representative for those services as defined in this agreement, and to provide advice and consultation to Jefferson County as a professional. Any opinions of probable project costs, reviews and observations, and other decisions made by KL Engineering, Inc., for Jefferson County are rendered on the basis of experience and qualifications and represents the professional judgment of KL Engineering, Inc. However, KL Engineering, Inc., cannot and does not guarantee that proposals, bids or actual project or construction costs will not vary from the opinion of probable cost prepared by it. Jefferson County agrees to hold KL Engineering, Inc., harmless for any claim arising out of or related in anyway to project or construction costs.
12. This agreement shall not be construed as giving KL Engineering, Inc., the responsibility or authority to direct or supervise construction means, methods, techniques, sequence, or procedures of construction selected by the contractors or subcontractors or the safety precautions and programs incident to the work of the contractors or subcontractors.
13. This agreement shall be construed and interpreted in accordance with the laws of the State of Wisconsin.
14. This agreement cannot be changed or terminated orally. No waiver of compliance with any provision or condition hereof should be effective unless agreed in writing duly executed by the parties hereto.
15. This agreement contains the entire understanding between the parties on the subject matter hereof and no representations, inducements, promises or agreements not embodied herein (unless agreed in writing duly executed) shall be of any force or effect, and this agreement supersedes any other prior understanding entered into between the parties on the subject matter hereof.



## **SPECIAL PROVISIONS**

### **DEFINITIONS**

“MUNICIPALITY” means the Local Public Agency responsible for the PROJECT within their jurisdiction in the LOCAL PROGRAM.

“DEPARTMENT” means the Wisconsin Department of Transportation.

“GUIDE” means the DEPARTMENT’S “Sponsor’s Guide to Non-Traditional Transportation Project Implementation”, September 2020 edition.

“MANUAL” means the DEPARTMENT’S Construction and Materials Manual (CMM); Finals Process for Let Project Closeout; Facilities Development Manual (FDM); LRFD Bridge Manual (BM); and Standard Specifications for Highway and Structure Construction (Standard Specifications,) and materials referenced in those manuals.

### **SCOPE OF SERVICES**

#### **A. GENERAL**

- (1) Services under the CONTRACT shall be performed in accordance with the DEPARTMENT’S “Sponsor’s Guide to Non-Traditional Transportation Project Implementation”, August 2018 edition excepting the following:
  - (a) The superstructure and pier/ abutment repair for the two-span RR bridge and the three existing culverts to be replaced shall be designed and permitted in conjunction with this project but will be completed with 100% local funds and will not follow WisDOT Bureau of Structures procedures.
- (2) The CONTRACT incorporates the design of a 2.8-mile multi-use trail in an existing We Energies corridor.
- (3) Design files shall be completed in 2018 Civil 3D format.

#### **B. DESIGN REPORTS**

- (1) A Design Study Report will be prepared for the PROJECT with applicable sections completed aligning with the project type-bike ped trail.
- (2) A Pavement Report is not included in this CONTRACT.
- (3) An Encroachment Report is not included in this CONTRACT. Any encroachments shall be documented in the Design Study Report.

#### **C. ENVIRONMENTAL DOCUMENTATION**

By its execution of this CONTRACT, the CONSULTANT does hereby specify in accordance with the disclosure statement requirements of 40 CFR 1506.5(c) and 23 CFR 771.123(d) that CONSULTANT has no financial or other interest in the outcome of this PROJECT.

The CONSULTANT shall prepare a Categorical Exclusion Checklist (CEC) Environmental document for the PROJECT as specified in the MANUAL and Chapter TRANS 400, Wisconsin Administrative Code. The appropriate number of copies shall be furnished to the MUNICIPALITY and DEPARTMENT for approval.

If review of the environmental document by the MUNICIPALITY, DEPARTMENT, or FHWA indicates that changes to this document are necessary, all such changes shall be made by the CONSULTANT.

In preparing environmental documentation, CONSULTANT shall consider and evaluate as alternatives to the PROJECT other reasonable actions or activities that may achieve the same or similar goals of the proposed PROJECT, including other or additional transportation alternatives and intermodal opportunities and the alternative of taking no action. CONSULTANT shall evaluate alternative courses of action based upon a balanced consideration of the environment, public comments, and the need for safe and efficient transportation consistent with local, state, and national environmental goals. CONSULTANT shall prepare environmental documents that are concise and emphasize real environmental issues and plausible alternatives. CONSULTANT shall comply with the requirements specified in the MANUAL and TRANS 400, Wisconsin Administrative Code. In the event of a conflict between the MANUAL and TRANS 400, Wisconsin Administrative Code, the administrative rule supersedes.

(1) Historical and Archaeological Surveys and Studies:

- (a) The PROJECT is expected to be screened for history and placed on WisDOT's screening list.
- (b) The MUNICIPALITY has separately contracted with an archaeologist to include the archaeology report. The MUNICIPALITY will provide to the CONSULTANT for submission with the Section 106 documentation.

(2) Hazardous Materials/Contamination Assessments:

- (a) Conduct a Phase 1 investigation for the PROJECT in accordance with the MANUAL.
- (b) Obtain direction from the Project Manager and the Region environmental coordinator prior to conducting further evaluation studies when Phase 1 indicates further work is needed.
- (c) Phase 2 - Environmental Sampling is not included in the CONTRACT.
- (d) The MUNICIPALITY acknowledges that the CONSULTANT is not, by virtue of this CONTRACT, the owner or generator of any waste materials generated as a result of the Hazardous Materials/Contamination Assessments services performed by the CONSULTANT under this CONTRACT. Dispose of investigative waste in accordance with the MANUAL.

D. AGENCY COORDINATION

(1) Permits – Individual (list all):

- (a) WisDNR/ACOE Permit #1: NR 216/ACOE 404 – wetland fill:

The CONSULTANT shall evaluate the effects of the PROJECT on the wetlands which will be affected by the proposed trail and structures (culverts #32, 33 & 35 and the two-span railroad bridge). The MUNICIPALITY will process the permit with the associated permit fees if locally let. The WisDNR & ACOE permit approval will then be forwarded to the MUNICIPALITY to satisfy for their wetland zoning requirements.

The MUNICIPALITY shall pay any permit fees.

- (b) WisDNR/WRAPP Grading/Erosion Control Permit (local or state let):

The CONSULTANT shall prepare the necessary documentation required to address the grading and erosion control as required by WisDNR. This assumes that if sediment removal reduction requirements cannot be met through basic trail design, that WisDNR will allow the reduced sedimentation removal based on the scope of the PROJECT (e.g.,

no retention ponds will be required to be designed). If specific stormwater facilities are required, this will be considered "EXTRA SERVICES".

- (c) The MUNICIPALITY shall pay any permit fees.  
Jefferson MUNICIPALITY Floodplain Permit:

The CONSULTANT shall evaluate the effects of the PROJECT on impacts to MUNICIPALITY roadways right of way and shall prepare the necessary applications to allow for the construction activities.

The CONSULTANT shall provide prepare detailed hydrology a report detailing the hydrology and hydraulic conditions (existing and proposed) reports as required for replacement of culverts #32, 33 & 35 as identified on the We Energies GIS System and the rehabilitation of the existing two-span railroad bridge substructure and proposed superstructure over the Rock River. This assumes the proposed improvements will not cause an increase or decrease relative to the published FEMA base flood elevations. Any work associated with a FEMA Conditional Letter of Map Revision (CLOMR) or Letter of Map Change (LOMR) shall be considered "EXTRA SERVICES".

The CONSULTANT shall provide the required additional calculations, exhibits, and permit forms as required by any the additional impacts proposed.

The level of effort associated with this work assumes 40 hours between the reporting, permitting, and coordination with the Zoning department for this permit. If the level of effort exceeds this amount, this will be considered "EXTRA SERVICES".

- (d) ACOE/WisDNR Chapter 30 permit:

The CONSULTANT shall prepare the necessary documentation required to address the Chapter 30 permit as required by WisDNR. This permit shall include culverts #32, 33 & 35 as identified on the We Energies GIS System and the rehabilitation of the existing two-span railroad bridge substructure and proposed superstructure over the Rock River.

The contract assumes the proposed improvements will not cause an increase or decrease relative to the published FEMA base flood elevations. Any work associated with a FEMA Conditional Letter of Map Revision (CLOMR) or Letter of Map Change (LOMR) shall be considered "EXTRA SERVICES".

The MUNICIPALITY shall pay any permit fees.

## E. RAILROAD/ UTILITY INVOLVEMENTS

- (1) General:

- (a) The CONSULTANT shall follow the procedures of the GUIDE and the Local Project Coordination Task List in accordance with a Non-TRANS 220 PROJECT.  
(b) It is anticipated that no utility relocations will be needed as part of this PROJECT. If the CONSULTANT is required to complete documentation for relocations, this work will be considered "EXTRA SERVICES".

- (2) Railroad Negotiations/Agreements:

Not included in this CONTRACT.

## F. PUBLIC INVOLVEMENT

### (1) General:

- (a) The CONSULTANT shall prepare a public involvement plan in accordance with the MANUAL.
- (b) The MUNICIPALITY will be responsible for any property owner meetings.
- (c) The CONSULTANT shall keep a Public Correspondence Log for the PROJECT.

### (2) Public Involvement Meetings:

- (a) The CONSULTANT shall prepare all exhibits and supplementary handout material for a single public involvement meeting. CONSULTANT attendance is included in a virtual format, but the MUNICIPALITY will lead the meeting.
- (b) The MUNICIPALITY shall prepare a summary report after the public involvement meeting.
- (c) The CONSULTANT shall discuss with the MUNICIPALITY after the public involvement meeting the comments received and recommend the possible disposition of these comments and suggestions.
- (d) The MUNICIPALITY will arrange the meeting location.
- (e) The CONSULTANT shall provide the MUNICIPALITY with copies of all public involvement correspondence and file notes.

### (3) Project Mailings, Newsletters:

- (a) The MUNICIPALITY will prepare a database for PROJECT mailings, newsletters, or any contact lists.
- (b) The MUNICIPALITY shall distribute all communications directly to property owners and copy the MUNICIPALITY on the correspondence.
- (c) The MUNICIPALITY will distribute any meeting announcements and general information to stakeholder groups and the media and will copy the CONSULTANT.
- (d) The MUNICIPALITY will be responsible for all contacts and communications with the news media, other local public officials, and members of the State Legislature. The CONSULTANT shall prepare the documentation for distribution and will forward to the MUNICIPALITY.

## G. MEETINGS

- (1) The CONSULTANT shall attend or hold an Operational Planning Meeting to discuss the organization and processing of the Services under this CONTRACT. Utilities will also be invited to this meeting.
- (2) Two (2) meetings shall be held to plan, review, and coordinate the PROJECT with the MUNICIPALITY'S staff and/or meet with the MUNICIPALITY on-site.
- (3) The CONSULTANT shall attend one (1) pre-bid meeting with the MUNICIPALITY and potential contractors for the PROJECT.
- (4) The CONSULTANT shall attend one (1) pre-construction meeting with the MUNICIPALITY. The MUNICIPALITY will lead the meeting and provide agenda and meeting minutes.

## H. SURVEYS

- (1) Surveys shall be tied to the Jefferson MUNICIPALITY Coordinate System, Horizontal Datum: NAD 83(2011), Vertical Datum: NAVD 88 (Geoid 12A).

- (2) Structural and hydraulics survey includes the following (river varies from 175' to 225' wide and 3-5' deep):
  - (a) At the proposed new structure:
    - Existing abutments, wing walls & piers
    - Detailed ground topography around the abutments
    - Water surface at the structure with Ordinary High Water Mark (OHWM)
    - (6) cross sections of the Rock River bottom (upstream/downstream face at pedestrian bridge, toe of slope, and 40' upstream and 40' downstream)
  - (b) At the railroad bridge upstream and the Rockvale Road downstream structure
    - Roadway (3 points), bottom chord (1), OHWM, water surface and Rock River bottom at mid-span (1).
  - (c) At secondary channel 3,000 feet east of Rock River (culvert #36)
    - (3) cross sections
    - Invert and crown elevations
  - (d) This does not include the cost of any railroad flagging which may be required for the survey associated with the upstream railroad bridge. If railroad flagging is needed, the MUNICIPALITY would be billed by the railroad.
- (3) Floodplain survey includes cross sections of the proposed corridor every 100 feet for the length of the corridor within the mapped floodplain (6,300 feet of floodplain = 64 sections).
- (4) Trail survey includes detailed topographic survey at the following locations:
  - (a) (3) roadway crossings
  - (b) (8) agricultural crossings
  - (c) (10) drainage culverts (including upstream and downstream swales/waterways),
  - (d) (24) H-pole locations
  - (e) 800' of detailed topographic survey (at a 50' grid) within the corridor where the trail is expected to be off the utility access road alignment on the west end.
  - (f) Existing utilities marked in the field
  - (g) (8) cross-sections at 25' increments centered on the abandoned cattle pass (culvert #38)
  - (h) (18) geotechnical boring locations
- (5) The CONSULTANT shall submit all survey data (including description, measured, and computed data) to the MUNICIPALITY.
- (6) Right of way staking is not included in this CONTRACT.
- (7) With the exception of items noted in (2), (3), and (4) all other survey information utilized for this CONTRACT shall be gathered from the MUNICIPALITY digital files available from their GIS mapping. Any additional field survey shall be considered "EXTRA SERVICES".

#### I. SOILS AND SUBSURFACE INVESTIGATIONS

- (1) These services are not included within this contract and the MUNICIPALITY shall be coordinating directly. Geotechnical investigations shall include (2) 10' borings at culvert #38 for the minor retaining walls and (16) borings within the proposed trail footprint.

#### J. ROAD PLANS

- (1) Road Plans are the compilation of documents, reproducible drawings, depicting the location, character, dimensions, and relevant data necessary to the layout and construction of the prescribed work. Road Plans will consist of the following:

- (a) Title Sheet
  - (b) Project Overview
  - (c) Typical Cross Sections, General Notes, and Special Details
  - (d) Standard Detail and Signage Drawings
  - (e) Erosion Control Plan
  - (f) Alignment Detail
  - (g) Plan and Profile Sheets
  - (h) Intersection Details (signing & marking included)
  - (i) Miscellaneous Quantities with Earthwork
  - (j) Cross Sections (completed every 100' along the mainline trail, every 25' for 100' approaching each roadway, and at each agricultural crossing).
- (2) The CONSULTANT shall show utilities on all appropriate plan sheets that will provide information to identify utility conflicts. A two dimensional representation of utilities shall be shown on cross sections.

## K. STRUCTURE PLANS

- (1) Culvert replacement is included for culverts #32 and #35 as identified on the We Energies GIS System. The effort associated with the replacement for Culvert #33 (just east of the proposed two-span bridge) is included as an "If Authorized" contract item, and will be dependent on the hydrology and hydraulics analysis of the area. The design efforts assume the following:
- (a) The CONSULTANT will attend two virtual meetings for this effort. An initial meeting with the MUNICIPALITY to establish preferred design parameters and then a second meeting with the Zoning department once the draft memo is completed.
  - (b) Hydrology and hydraulics analysis is conducted for each culvert and a summary memo is prepared which details the flow and options to match or exceed flow with different culvert types and sizes as well as costs associated with each.
  - (c) The replacement culverts will be pre-fabricated and will not require structural design.
  - (d) Estimates, plans and specifications are prepared for We Energies or MUNICIPALITY direct installation. No formal bidding documents are included in this effort. If required, this would be considered "EXTRA SERVICES".
  - (e) The permitting and design process for these culverts will not follow WisDOT standard procedure but will follow the locally-constructed and locally-permitted procedure.
- (2) The CONTRACT includes design of two separate MSE block walls of a height less than 4.0' exposed face (not requiring Bureau of Structures submittal). These designs assume that no railing is required, the walls are in straight alignment, and require one detailed plan sheet per wall. These walls are planned for the embankment on either side of the abandoned cattle underpass (Culvert #38). Approximate length of each of the walls shall not exceed 50'
- (3) The CONSULTANT shall design a two-span pre-fabricated bridge that sits on the existing foundations and piers crossing the Rock River. The bridge design assumptions include the following:
- (a) The project will be locally let and locally-permitted and will not follow WisDOT Bureau of Structure submittals.
  - (b) Hydrology and hydraulic impacts will be evaluated based on the potential addition of rip rap at the abutments and/or piers. This assumes the proposed improvements will not cause an increase or decrease relative to the published FEMA base flood elevations. Any work associated with a FEMA Conditional Letter of Map Revision (CLOMR) or Letter of Map Change (LOMR) shall be considered "EXTRA SERVICES".
  - (b) No underwater improvements are required.
  - (c) The design details for the prefabricated steel pedestrian truss shall incorporate the following structure criteria:
    - (i) Match the design from Jefferson MUNICIPALITY Interurban Trail Phase 1

- (ii) 12' clear width
- (iii) 90 psf pedestrian loading
- (iv) H10 (20,000 lbs) vehicle loading
- (f) The CONSULTANT shall conduct a visual field inspection to supplement the field inspection completed in February 2022. This additional field inspection will review the overall condition and identify specific elements requiring treatment to prolong the life expectancy with consideration to future maintenance. The inspection will be visual in nature and may include field measurements to confirm no additional deterioration occurred.
- (g) The repair plans for the existing piers and abutments include the following: concrete surface repair and reconstruction of existing beam seats and abutment backwalls as required for the new pedestrian structure. Additional repairs shall be considered extra services.
- (h) Plans for Structures shall be fully dimensioned. The plans shall be prepared with such precision and detail to allow for the convenient layout in the field with customary degree of accuracy, and to allow for the production of an accurate estimate of quantities for all pertinent items of work to be performed in the PROJECT.
- (i) When the final plans for a structure have been completed, the CONSULTANT shall furnish the MUNICIPALITY with plans for review and examination.
- (j) Along with the plans for structures the CONSULTANT shall submit one copy or reproduction of the design computations for the MUNICIPALITY's review and permanent file.
- (k) The CONSULTANT shall furnish such other pertinent information and data with respect to the plans and design as the MUNICIPALITY may request.

L. PLANS, SPECIFICATIONS, AND ESTIMATES (PS&E)

- (1) The CONSULTANT shall prepare a complete PS&E as specified in the GUIDE.
- (2) The MUNICIPALITY will advertise the PROJECT through their on-line website. The CONSULTANT shall prepare the documents for the MUNICIPALITY to upload directly.
- (3) The CONSULTANT shall prepare the Request to Award.

M. PLATS

- (1) A Plat is not included in this contract.

N. SERVICES PROVIDED BY THE MUNICIPALITY

The MUNICIPALITY will provide to the CONSULTANT the following for the PROJECT:

1. Archaeology report for the PROJECT.
2. Wetland delineation for the PROJECT.
3. Geotechnical report for the PROJECT.
4. Permission for access to the property to be acquired for investigations and survey.
5. All permitting related to roadway crossings for the MUNICIPALITY and local municipalities.
6. Meeting minutes of any meetings with adjacent property owners that occur within the design of the trail. (CONSULTANT attendance is not included in the CONTRACT).
7. Any recent or past communications from adjacent property owners concerning the proposed PROJECT.
8. Digital files from the MUNICIPALITY's GIS system for incorporation within the plans.
9. Any supplemental information received from We Energies related to the corridor.
10. Meeting minutes from any face-to-face meetings with WisDOT (CONSULTANT attendance is not included in the CONTRACT).

O. PROSECUTION AND PROGRESS

- (1) The following items of work will be completed and/or submitted to the MUNICIPALITY by the indicated dates, if CONSULTANT has received the Notice to Proceed by August 31, 2022.

<b>Item</b>	<b>Date</b>
OPM/Kick-Off Meeting	September 2022
Data Collection/ Preliminary Environmental	September 2022
Hydrology & Hydraulics Analysis & Culvert Report	October 2022
Submitted: Draft permitting structure plans, draft permitting culvert plans, 30% trail plans, Section 106, & Local Floodplain permit	November 2022
Approved: Local floodplain permitting & Section 106 Submitted: DNR/ ACOE Chapter 30 and Wetland permits, Environmental Document	December 2022
Approved: Environmental Document Submitted: 60% trail plans	January 2023
Approved: DNR/ ACOE Chapter 30 permit & Wetland permit Submitted: 60% TMP, DSR, 60% Utility Plans	February 2023
DSR Approved	March 2023
90% Plans/ Draft PS&E	September 2023
Final PS&E	November 2023
Project Let	February 2024

P. ACCESS TO RECORDS

The CONSULTANT'S record of the services provided under this CONTRACT will be available for inspection and copying at: KL Engineering, Inc., W175N11081 Stonewood Dr Ste 104, Germantown, WI 53022.



**Specific Rate Contract Staff Hours and Direct Labor Costs - KL Engineering, Inc.**

**PROJECT TOTAL**

Project Name: Jefferson County Interurban Trail Ph 3

Project Limits: CTH F - County Line

Highway: Non Highway

County: Jefferson County

Classification			Project Manager		Senior Structural Engineer		Structural Engineer		Lead Engineer		Engineer		Surveyor		Survey Technician		Technician		Clerical / Admin		Total Direct Labor	
Negotiated Labor-Related Rate			\$155.00		\$156.00		\$97.00		\$125.00		\$98.00		\$129.00		\$84.00		\$112.00		\$96.00			
Outline	Task	Activity Code	Hours	Dollars	Hours	Dollars	Hours	Dollars	Hours	Dollars	Hours	Dollars	Hours	Dollars	Hours	Dollars	Hours	Dollars	Hours	Dollars	Hours	Dollars
1.1.2	Manage Project Scope and Schedule	887	33	\$5,115.00	0	\$0.00	0	\$0.00	4	\$500.00	0	\$0.00	0	\$0.00	0	\$0.00	0	\$0.00	0	\$0.00	37	\$5,615.00
1.4.1	Manage Project Stakeholders	743	22	\$3,410.00	4	\$624.00	0	\$0.00	35	\$4,375.00	8	\$784.00	0	\$0.00	0	\$0.00	0	\$0.00	0	\$0.00	69	\$9,193.00
2.2.2	Design Drainage	778	21	\$3,255.00	7	\$1,092.00	8	\$776.00	158	\$19,750.00	0	\$0.00	0	\$0.00	0	\$0.00	0	\$0.00	0	\$0.00	194	\$24,873.00
2.2.4	Design Geometrics and Details	776	58	\$8,990.00	0	\$0.00	0	\$0.00	216	\$27,000.00	190	\$18,620.00	0	\$0.00	0	\$0.00	0	\$0.00	0	\$0.00	464	\$54,610.00
2.2.5	Develop Quantities and Estimates	786	6	\$930.00	0	\$0.00	0	\$0.00	16	\$2,000.00	40	\$3,920.00	0	\$0.00	0	\$0.00	0	\$0.00	0	\$0.00	62	\$6,850.00
2.2.6	Develop PSE Documents	856	25	\$3,875.00	0	\$0.00	0	\$0.00	46	\$5,750.00	0	\$0.00	0	\$0.00	0	\$0.00	0	\$0.00	0	\$0.00	71	\$9,625.00
2.3.18	Conduct and Process Existing Field Survey	723	0	\$0.00	0	\$0.00	0	\$0.00	8	\$1,000.00	0	\$0.00	124	\$15,996.00	140	\$11,760.00	0	\$0.00	0	\$0.00	272	\$28,756.00
2.4.3	Analyze Hazardous Materials Site Impact	765	2	\$310.00	0	\$0.00	0	\$0.00	34	\$4,250.00	0	\$0.00	0	\$0.00	0	\$0.00	0	\$0.00	0	\$0.00	36	\$4,560.00
2.4.4	Analyze Natural Environment Impact	766	9	\$1,395.00	0	\$0.00	0	\$0.00	31	\$3,875.00	0	\$0.00	0	\$0.00	0	\$0.00	0	\$0.00	0	\$0.00	40	\$5,270.00
2.4.5	Environmental Documentation and Agency Coordination	769	33	\$5,115.00	6	\$936.00	0	\$0.00	91	\$11,375.00	60	\$5,880.00	0	\$0.00	0	\$0.00	0	\$0.00	2	\$192.00	192	\$23,498.00
2.5.4	Design Structure	656	22	\$3,410.00	50	\$7,800.00	10	\$970.00	74	\$9,250.00	20	\$1,960.00	0	\$0.00	0	\$0.00	30	\$3,360.00	0	\$0.00	206	\$26,750.00
2.5.6	Design Structure Hydrology and Hydraulics	658	1	\$155.00	3	\$468.00	0	\$0.00	36	\$4,500.00	0	\$0.00	0	\$0.00	0	\$0.00	0	\$0.00	0	\$0.00	40	\$5,123.00
2.7.6	Coordinate Utilities	746	11	\$1,705.00	0	\$0.00	0	\$0.00	30	\$3,750.00	16	\$1,568.00	0	\$0.00	0	\$0.00	0	\$0.00	0	\$0.00	57	\$7,023.00
<b>TOTAL:</b>			<b>243</b>	<b>\$37,665.00</b>	<b>70</b>	<b>\$10,920.00</b>	<b>18</b>	<b>\$1,746.00</b>	<b>779</b>	<b>\$97,375.00</b>	<b>334</b>	<b>\$32,732.00</b>	<b>124</b>	<b>\$15,996.00</b>	<b>140</b>	<b>\$11,760.00</b>	<b>30</b>	<b>\$3,360.00</b>	<b>2</b>	<b>\$192.00</b>	<b>1,740</b>	<b>\$211,746.00</b>

# Specific Rate Fee Computation Summary by Engineering Task - KL Engineering, Inc.

## PROJECT TOTAL

**Project Name:** Jefferson County Interurban Trail Ph 3  
**Project Limits:** CTH F - County Line  
**Highway:** Non Highway  
**County:** Jefferson County

Outline	Task	Activity Code	Direct Labor Costs	Direct Costs	Total
1.1.2	Manage Project Scope and Schedule	887	\$5,615.00	\$150.00	\$5,765.00
1.4.1	Manage Project Stakeholders	743	\$9,193.00	\$150.00	\$9,343.00
2.2.2	Design Drainage	778	\$24,873.00	\$0.00	\$24,873.00
2.2.4	Design Geometrics and Details	776	\$54,610.00	\$162.50	\$54,772.50
2.2.5	Develop Quantities and Estimates	786	\$6,850.00	\$0.00	\$6,850.00
2.2.6	Develop PSE Documents	856	\$9,625.00	\$150.00	\$9,775.00
2.3.18	Conduct and Process Existing Field Survey	723	\$28,756.00	\$2,450.00	\$31,206.00
2.4.3	Analyze Hazardous Materials Site Impact	765	\$4,560.00	\$0.00	\$4,560.00
2.4.4	Analyze Natural Environment Impact	766	\$5,270.00	\$0.00	\$5,270.00
2.4.5	Environmental Documentation and Agency Coordination	769	\$23,498.00	\$75.00	\$23,573.00
2.5.4	Design Structure	656	\$26,750.00	\$0.00	\$26,750.00
2.5.6	Design Structure Hydrology and Hydraulics	658	\$5,123.00	\$0.00	\$5,123.00
2.7.6	Coordinate Utilities	746	\$7,023.00	\$75.00	\$7,098.00
<b>TOTAL:</b>			\$211,746.00	\$3,212.50	\$214,958.50

## Direct Costs by Item - KL Engineering, Inc.

**Project Name:** Jefferson County Interurban Trail Ph 3

**Project Limits:** CTH F - County Line

**Highway:** Non Highway

**County:** Jefferson County

Outline	Task Code	Item	Unit Amount	Unit Type	Rate	Total Costs
1.1.2	887	Employee Mileage	240	mile	\$0.625	\$150.00
1.4.1	743	Employee Mileage	240	mile	\$0.625	\$150.00
2.2.4	776	Employee Mileage	260	mile	\$0.625	\$162.50
2.2.6	856	Employee Mileage	240	mile	\$0.625	\$150.00
2.3.18	723	Company Mileage	2,160	mile	\$0.625	\$1,350.00
		Meals	20	each	\$15.00	\$300.00
		Sonarmite Rental	2	day	\$400.00	\$800.00
2.4.5	769	Employee Mileage	120	mile	\$0.625	\$75.00
2.7.6	746	Employee Mileage	120	mile	\$0.625	\$75.00
<b>TOTAL</b>						<b>\$3,212.50</b>

**Specific Rate Contract Staff Hours and Direct Labor Costs - KL Engineering, Inc.**

**PROJECT TOTAL  
IF AUTHORIZED SERVICES**

Project Name: Jefferson County Interurban Trail Ph 3  
 Project Limits: CTH F - County Line  
 Highway: Non Highway  
 County: Jefferson County

Classification			Project Manager		Senior Structural Engineer		Structural Engineer		Lead Engineer		Engineer		Surveyor		Survey Technician		Technician		Clerical / Admin		Total Direct Labor	
Negotiated Labor-Related Rate			\$155.00		\$156.00		\$97.00		\$125.00		\$98.00		\$129.00		\$84.00		\$112.00		\$96.00			
Outline	Task	Activity Code	Hours	Dollars	Hours	Dollars	Hours	Dollars	Hours	Dollars	Hours	Dollars	Hours	Dollars	Hours	Dollars	Hours	Dollars	Hours	Dollars	Hours	Dollars
2.2.2	Design Drainage	778	3	\$465.00	1	\$156.00	0	\$0.00	30	\$3,750.00	0	\$0.00	0	\$0.00	0	\$0.00	0	\$0.00	0	\$0.00	34	\$4,371.00
<b>TOTAL:</b>			3	\$465.00	1	\$156.00	0	\$0.00	30	\$3,750.00	0	\$0.00	0	\$0.00	0	\$0.00	0	\$0.00	0	\$0.00	34	\$4,371.00

# Specific Rate Fee Computation Summary by Engineering Task - KL Engineering, Inc.

## PROJECT TOTAL

### IF AUTHORIZED SERVICES

Project Name: Jefferson County Interurban Trail Ph 3

Project Limits: CTH F - County Line

Highway: Non Highway

County: Jefferson County

Outline	Task	Activity Code	Direct Labor Costs	Direct Costs	Total
2.2.2	Design Drainage	778	\$4,371.00	\$0.00	\$4,371.00
<b>TOTAL:</b>			\$4,371.00	\$0.00	\$4,371.00

**Specific Rate Contract Total Fee Computation - KL Engineering, Inc.**

Project Name: **Jefferson County Interurban Trail Ph 3**  
 Project Limits: **CTH F - County Line**  
 Highway: **Non Highway**  
 County: **Jefferson County**

<b>Project ID</b>	<b>Contract</b>	<b>If Authorized Services</b>		<b>Total for Contract and If Authorized Services</b>
<b>Number of Staff Hours</b>	1,740	34		<b>1,774</b>
<b>Labor-Related Costs</b>	\$211,746.00	\$4,371.00		<b>\$216,117.00</b>
<b>Direct Costs</b>	\$3,212.50	\$0.00		<b>\$3,212.50</b>
<b>Subtotal</b>	<b>\$214,958.50</b>	<b>\$4,371.00</b>		<b>\$219,329.50</b>
<b>TOTAL COST</b>	<b>\$214,958.50</b>	<b>\$4,371.00</b>		<b>\$219,329.50</b>

## CONCESSION AGREEMENT

This Concession Agreement (hereinafter referred to as the “Agreement”) is made and entered into as of this \_\_\_\_ day of \_\_\_\_\_, 2022 by and between Jefferson County (hereinafter referred to as the “County”) and The Surf Shack, LLC (hereinafter referred to as the “Concessionaire”). Kevin Wiesmann shall be the primary representative of the County in the management of this agreement. The primary representative of the Concessionaire is Nathan Olson (Owner).

### RECITALS

WHEREAS, the County owns and operates multiple parks, including the Park known as Cappies Landing, located in the Town of Watertown at N8625 Jefferson Road, Watertown, WI 53094, hereinafter referred to as the Park; and

WHEREAS, Concessionaire desires to provide and operate a concession stand at the Park for the purpose of renting kayaks, canoes, and stand up paddle boards to the Park patrons; and

WHEREAS, the County is willing to permit the Concessionaire to provide and operate a concession stand at the Park in accordance with and subject to the limitations set forth in this Agreement.

NOW, THEREFORE, in consideration of their mutual promises, the parties agree as follows:

**1. Term:** The term of this agreement shall be for one year commencing on August 15, 2022 and ending on August 14<sup>th</sup>, 2023, automatically renewing for one year terms unless terminated by either party for any reason or no reason upon 30 days written notice. During this term, the County grants to the Concessionaire the right to operate the concession at Cappies Landing in exchange for the concession payment provided herein. Except as provided herein, the Agreement shall terminate on the date above and the Concessionaire shall relinquish all claims and rights regarding the concession at Cappies Landing at that time. The terms of this Agreement may be renegotiated at any time by mutual consent of both parties.

**2. Location:** The concession will be located on those portions of Cappies Landing described in Exhibit “A” (hereinafter identified collectively as the “premises”) which is attached and made a part of

this Agreement.

**3. Concessionaire Service:** Concessionaire shall offer for rent the use of kayaks, canoes, and paddleboards and will include all required or appropriate safety equipment.

**4. Hours of Operation:** The concession shall be in operation on a daily basis from at least the third weekend in May through Labor Day weekend each year. Hours of operation will be no earlier than sunrise to no later than sunset each day.

**5. Signage/Advertising:** The County must authorize in writing any use of signs or Advertising or display materials relating to the concession and displayed on the Premises. All signs or advertising issued or used by the Concessionaire shall be paid for by the Concessionaire and shall clearly identify that such sign or advertising is on behalf of "The Surf Shack, LLC."

**6. Compliance:** Concessionaire agrees to conduct its business and to operate the same in compliance with all health codes, safety standards and other applicable laws, ordinances and regulations, and to obtain all necessary City, County, State, and Federal Licenses, permits and tax numbers, as required to conduct such operations. Concessionaire further agrees to pay any and all income taxes, sales taxes and other taxes which may be due or become due in connection with Concessionaire's business. Concessionaire shall train and closely supervise all concession employees, vendors and salespersons so they are aware of and adhere to all terms and conditions of this Agreement and all applicable laws, rules and regulations of the State of Wisconsin, the City/Town of Watertown and Jefferson County.

**8. Premises Upkeep:** The Concessionaire will maintain and keep up all structures and all surrounding ground areas of the Premises, and in particular, the rental areas, in good repair, and in a clean, neat and sanitary condition at all times. The high standards of maintenance and upkeep of the Premises for a clean, neat and sanitary condition shall include, but not be limited to: removal of weeds, trash and obstructions; cleaning raking of



landing areas as needed of all areas of the Premises, except when such activities may be performed by the County, at its sole discretion. The Concessionaire will not cause or allow any waste or nuisance upon the Premises.

**9. Temporary Closure:** If the County determines that an emergency exists, the County may order the concession to be temporarily closed. Closures for severe emergencies such as flooding or storm damage may require that the County close the concession for an extended period. Any closure of the concession by the County for a period of 15 days or longer for emergency purposes during a period between Memorial Day and Labor Day shall permit the Concessionaire to request re-negotiations with the County on the percentage fee to be paid to the County for that calendar year. The County shall agree to negotiate in good faith in such circumstances.

**10. Concession Payments:** The Concessionaire agrees to pay a percentage of the gross annual revenues collected from this concession to the County. These payments shall be made on or before April 1st of the following year. For the purposes of the Agreement “gross annual revenues” are all revenues collected by the Concessionaire for sales of goods and services, rental of equipment, and booking of activities at the Park, excluding sales taxes collected. The County acknowledges that the Concessionaire may have operations at other locations other than Cappies Landing and the County is not entitled to any portion of revenues collected from those operations unless there is a separate agreement specific to this other operation. During the term of this Agreement the percentage of the gross annual revenues paid to the County shall be 10% (ten percent).

**11. Independent Contractors:** Concessionaire is an independent contractor and shall not be considered an employee, officer or agent of the County. Concessionaire shall hire and employ such persons as Concessionaire deems necessary to provide adequate concession services and shall retain the right to exercise full control and supervision of all such persons assisting Concessionaire in the performance of services hereunder. Concessionaire shall be solely

responsible for all matters relating to payment of its employees including workers compensation, social security and income withholding, and all other regulations governing such matters.

**12. Assignment:** Concessionaire shall not sub-contract or otherwise assign, delegate or transfer the rights, duties and services to be performed under this Agreement, or any part hereof, without the prior written consent of the County.

**13. Seller's Permit:** The Concessionaire shall obtain and hold a seller's permit if necessary and comply with all sales tax requirements under current or future Wisconsin law.

**14. Termination:** Either party shall have the right to terminate this Agreement upon 30 days prior written notice provided to the other party. Upon termination of this Agreement for any reason, the Concessionaire shall promptly remove all of Concessionaire's personal property and leave the premises in a clean and orderly condition. Any property or improvements remaining at the end of the 30 day termination period shall be considered abandoned property and shall be disposed of by the County as it sees fit. Upon termination, Concessionaire shall be required to pay any and all amounts then due and owing to the County under the terms of this Agreement.

**15. Insurance:** Concessionaire agrees to obtain and maintain, at Concessionaire's sole cost and expense, comprehensive general liability insurance coverage to insure against all claims which arise from the operation or performance of Concessionaire's activities pursuant to this Agreement with single limit coverage applying to bodily and personal injury liability and property damage of not less than \$1,000,000 (one million dollars) per occurrence. This policy shall contain an endorsement listing the County, its officers, employees, agents and representatives as additional insureds, and shall be submitted to the County upon execution of this Agreement. Concessionaire shall also obtain worker's compensation insurance, or a waiver of such insurance, in accordance with Wisconsin law. Concessionaire shall maintain any casualty or other insurance deemed desirable by Concessionaire to protect Concessionaire's personnel,

property and equipment placed or utilized at the Park.

**16. Indemnity:** Concessionaire agrees to indemnify, hold harmless and defend the County, its officers, agents, and employees from and against any and all loss, liability, expense, claims, costs, suits and damages, including attorney's fees, however caused, arising out of or resulting from the operations, acts or omissions of the Concessionaire, its employees, officers and agents, in performance of Concessionaire's services and obligations under this Agreement. The County agrees to indemnify, hold harmless and defend the Concessionaire, its officers, agents, and employees from and against any and all loss, liability, expense, claims, costs, suits and damages, including attorney's fees, however caused, arising out of or resulting from the operations, acts or omissions of the County, its employees, officers and agents, in performance of County's services and obligations under this Agreement. The obligations of Concessionaire under this paragraph shall survive the expiration or termination of this Agreement. Nothing in this Agreement shall be construed as a waiver of any statutory defenses, limitations of liability, or immunities to which County may be entitled according to law.

**17. Included in this Agreement:** In this Agreement, the County and the Concessionaire include their respective employees, officers, members, directors, agents, servants, contractors, representatives, partners, assignees and successors. If the Concessionaire ceases to exist in fact or by law, the County may immediately terminate this Agreement and, without waiving any remedy available to it, perform the duties under this Agreement.

**18. Other Agreements Superseded:** This Agreement shall constitute the entire Agreement and previous Agreement communications or Agreements pertaining to this Agreement are hereby superseded. Any contractual revisions including cost adjustments and time extensions must be made by an amendment to this Agreement or other written documentation, signed by both parties at least 30 days prior to the ending date of this Agreement. The Concessionaire shall notify its insurance company and its surety, if any, of

any amendment.

IN WITNESS WHEREOF, the parties hereby cause this Agreement to be executed as of the day and year first above written.

Jefferson County:

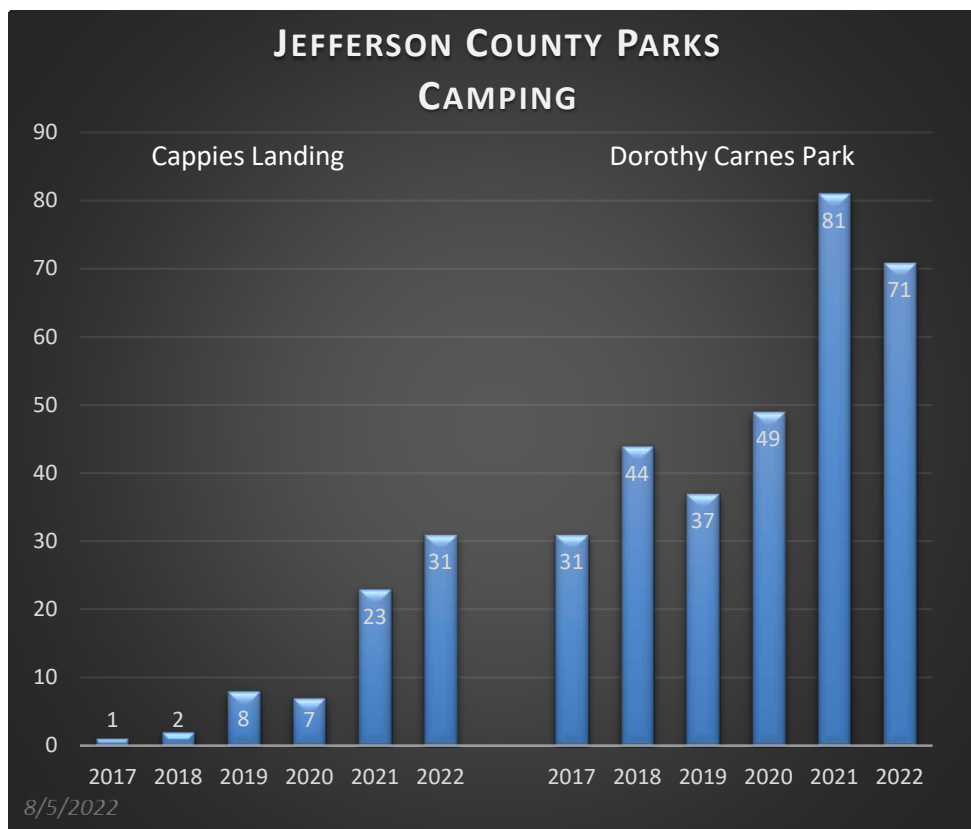
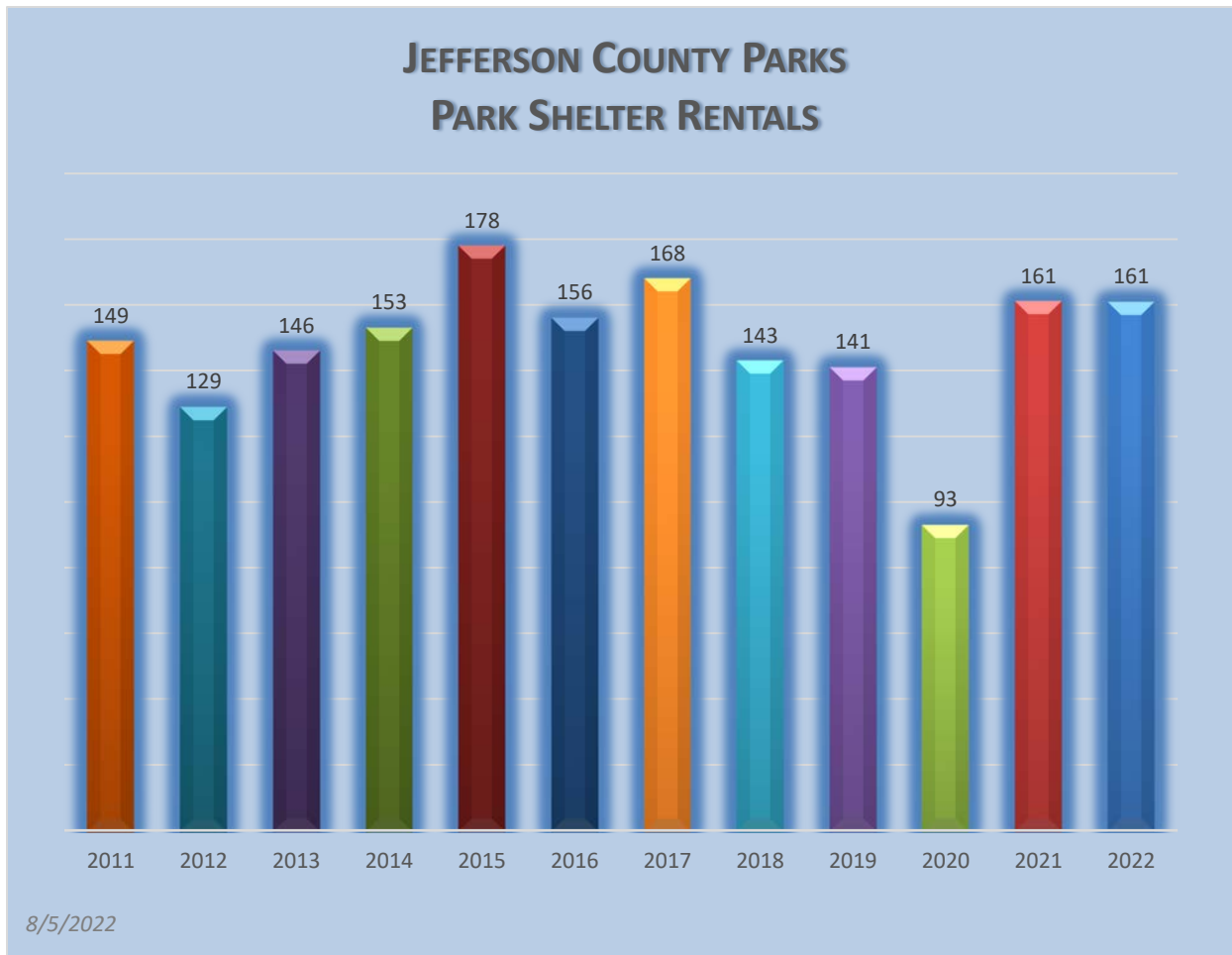
By: Kevin Wiesmann

Its: Parks Director

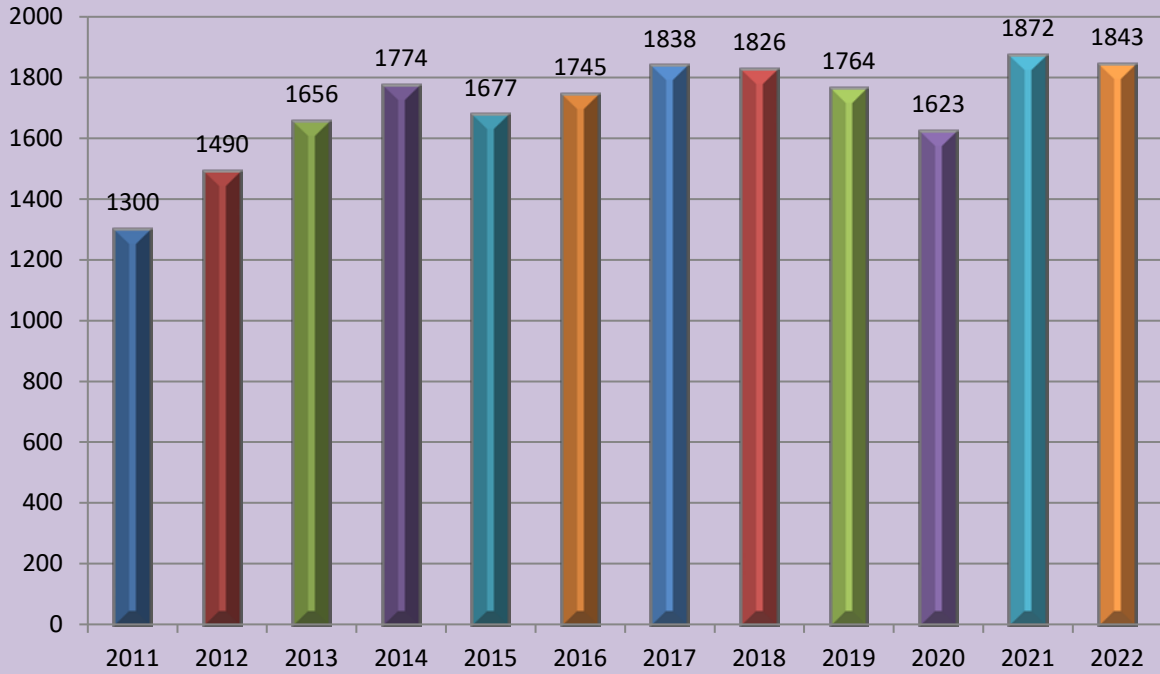
Concessionaire – The Surf Shack LLC:

By: \_\_\_\_\_

Its: \_\_\_\_\_

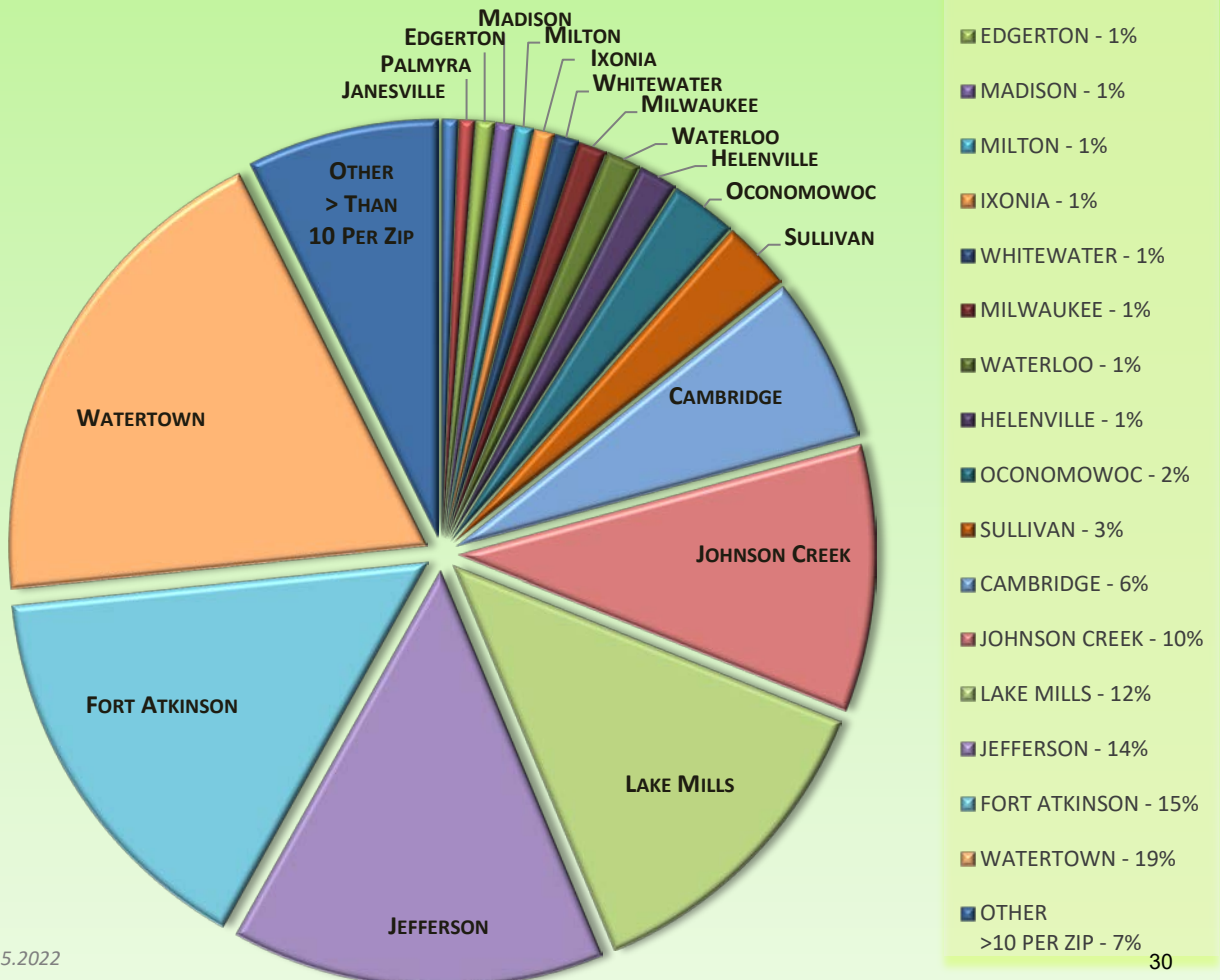


## JEFFERSON COUNTY DOG PARK ANNUAL TAG SALES - 2022



8.5.2022

### 2022 ANNUAL JEFFERSON COUNTY DOG PARK TAGS BY CITY



8.5.2022

	Dane		Dodge	Jefferson		Rock		Waukehsa
	Low	High		Low	High	Low	High	
<b>Boat Landings</b>								
Resident Daily						\$8.00		
Daily				\$5.00				
Non-Resident Daily						\$10.00		
Annual				\$25.00				
<b>Lake Access</b>								
Resident Daily	\$8.00							
Resident Annual	\$40.00							
Resident Senior Daily	\$8.00							
Resident Senior Annual	\$21.00							
<b>Camping</b>								
Non-Electric	\$15.00	\$18.00	\$20.00	\$20.00				
Firewood			\$5.00	\$5.00				
<b>Star Gazing Permit</b>		\$10.00		\$10.00				
<b>Shelter</b>								
Weekday			\$90.00					\$85.00
Weekend			\$130.00					\$160.00
Resident				\$35.00	\$275.00	\$50.00	\$250.00	
Non-Resident				\$40.00	\$300.00	\$75.00	\$300.00	
Standard Weekday	\$60.00	\$140.00						
Standard Weekend	\$60.00	\$140.00						
Premier Weekday	\$75.00	\$145.00						
Premier Weekend	\$115.00	\$205.00						
<b>Alcohol Permit</b>								
Required for 25+ ppl	\$30.00	\$240.00						
Vending Permit	\$80.00	\$300.00						
<b>Dog Permit</b>								
Resident Daily	\$5.00			\$5.00				
Resident Annual	\$35.00			\$25.00				
Senior Daily	\$5.00			\$5.00				
Non-Resident				\$30.00				
Senior Annual	\$17.00			\$15.00				
Disabled				\$15.00				
Veteran				\$15.00				
Replacement				\$10.00				

12801.485200

	Donations	50/50	BWAV	2022 BWAV Proceeds
<b>May (June 2 Rain Date)</b>			\$ 4,687.00	\$ 4,687.00
<b>23-Jun</b>	\$ 127.00	\$ 655.00	\$ 4,900.50	\$ 5,682.50
<b>28-Jul</b>	\$ 44.00	\$ 825.00	\$ 5,598.50	\$ 6,467.50
<b>25-Aug</b>				\$ -
				<b>\$ 16,837.00</b>

	2022 BWAV Expenses
Raffle License	(\$25.50)
Raffle Tickets	\$0.00
Pat's Services - May (June 2)	(\$130.00)
Pat's Services - June	(\$260.00)
Pat's Services - July	(\$260.00)
Pat's Services - August	\$0.00
	<b>(\$675.50)</b>
	<b>\$ 16,161.50</b>



FROM	2022	1	TO	2022	12	
ACCOUNTS FOR:	ORIGINAL	ESTIM REV	REVISED	ACTUAL	REMAINING	PCT
<b>12801 Parks Department</b>						
12801 411100 General Property Taxes	\$ (770,758.00)	\$ -	\$ (770,758.31)	\$ (449,609.02)	\$ (321,149.29)	58.30%
12801 421001 State Aid	\$ (1,750.00)	\$ -	\$ (1,750.00)	\$ -	\$ (1,750.00)	0.00%
12801 421099 Capital State Aid	\$ (10,000.00)	\$ -	\$ (10,000.00)	\$ -	\$ (10,000.00)	0.00%
12801 451002 Private Party Photocopy	\$ -	\$ -	\$ -	\$ (643.30)	\$ 643.30	0.00%
12801 457013 Animal Fees	\$ -	\$ -	\$ -	\$ 100.00	\$ (100.00)	0.00%
12801 457017 Park Shelter Rental Fees	\$ (14,000.00)	\$ -	\$ (14,000.00)	\$ (132.68)	\$ (13,867.32)	0.90%
12801 457019 Park Shelter Deposits	\$ -	\$ -	\$ -	\$ 3,000.00	\$ (3,000.00)	0.00%
12801 457024 Camping Fees	\$ (1,600.00)	\$ -	\$ (1,600.00)	\$ -	\$ (1,600.00)	0.00%
12801 457030 Credit Card Surcharge	\$ -	\$ -	\$ -	\$ (1,313.53)	\$ 1,313.53	0.00%
12801 471130 State Billed-Other	\$ (2,250.00)	\$ -	\$ (2,250.00)	\$ -	\$ (2,250.00)	0.00%
12801 482011 Rent Garden Plots	\$ (600.00)	\$ -	\$ (600.00)	\$ (665.00)	\$ 65.00	110.80%
12801 482021 Camping Fee Other	\$ (40.00)	\$ -	\$ (40.00)	\$ -	\$ (40.00)	0.00%
12801 483001 Sale Of County Property	\$ (47,500.00)	\$ -	\$ (47,500.00)	\$ -	\$ (47,500.00)	0.00%
12801 483002 Misc Sale/Material & Supply	\$ (200.00)	\$ -	\$ (200.00)	\$ (774.90)	\$ 574.90	387.50%
12801 484001 Insurance Recovery	\$ -	\$ -	\$ -	\$ (4,549.80)	\$ 4,549.80	0.00%
12801 485200 Donations Restricted	\$ -	\$ -	\$ -	\$ (12,182.34)	\$ 12,182.34	0.00%
12801 486004 Miscellaneous Revenue	\$ -	\$ -	\$ -	\$ (1,437.97)	\$ 1,437.97	0.00%
12801 511110 Salary-Permanent Regular	\$ 92,666.00	\$ -	\$ 92,665.95	\$ 51,306.56	\$ 41,359.39	55.40%
12801 511210 Wages-Regular	\$ 369,078.00	\$ -	\$ 369,077.97	\$ 110,265.84	\$ 258,812.13	29.90%
12801 511220 Wages-Overtime	\$ 2,134.00	\$ -	\$ 2,133.69	\$ 480.73	\$ 1,652.96	22.50%
12801 511240 Wages-Temporary	\$ 23,637.00	\$ -	\$ 23,636.53	\$ 2,478.53	\$ 21,158.00	10.50%
12801 511330 Wages-Longevity Pay	\$ 279.00	\$ -	\$ 279.06	\$ -	\$ 279.06	0.00%
12801 512141 Social Security	\$ 36,613.00	\$ -	\$ 36,612.75	\$ 12,159.49	\$ 24,453.26	33.20%
12801 512142 Retirement (Employer)	\$ 25,400.00	\$ -	\$ 25,400.31	\$ 9,277.85	\$ 16,122.46	36.50%
12801 512144 Health Insurance	\$ 74,808.00	\$ -	\$ 74,808.42	\$ 27,447.00	\$ 47,361.42	36.70%
12801 512145 Life Insurance	\$ 82.00	\$ -	\$ 81.50	\$ 29.26	\$ 52.24	35.90%
12801 512148 Unemployment Compensation	\$ 2,275.00	\$ -	\$ 2,275.00	\$ 2,531.60	\$ (256.60)	111.30%
12801 512151 HSA Contribution	\$ 6,119.00	\$ -	\$ 6,118.75	\$ 3,668.34	\$ 2,450.41	60.00%
12801 512173 Dental Insurance	\$ 5,264.00	\$ -	\$ 5,264.04	\$ 2,026.89	\$ 3,237.15	38.50%
12801 521219 Other Professional Serv	\$ 10,200.00	\$ -	\$ 10,200.00	\$ 793.64	\$ 9,406.36	7.80%
12801 529170 Grounds Keeping Charges	\$ -	\$ -	\$ -	\$ 436.52	\$ (436.52)	0.00%
12801 531001 Credit Card Fees	\$ -	\$ -	\$ -	\$ 2,580.59	\$ (2,580.59)	0.00%
12801 531100 Permits Purchased	\$ 600.00	\$ -	\$ 600.00	\$ 195.00	\$ 405.00	32.50%
12801 531303 Computer Equipmt & Software	\$ 1,818.00	\$ -	\$ 1,818.00	\$ 191.00	\$ 1,627.00	10.50%
12801 531311 Postage & Box Rent	\$ 300.00	\$ -	\$ 300.00	\$ 76.32	\$ 223.68	25.40%
12801 531312 Office Supplies	\$ 2,000.00	\$ -	\$ 2,000.00	\$ 762.35	\$ 1,237.65	38.10%
12801 531313 Printing & Duplicating	\$ 1,000.00	\$ -	\$ 1,000.00	\$ 918.09	\$ 81.91	91.80%
12801 531314 Small Items Of Equipment	\$ 6,400.00	\$ -	\$ 6,400.00	\$ 1,713.33	\$ 4,686.67	26.80%
12801 531320 Safety Supplies	\$ 1,600.00	\$ -	\$ 1,600.00	\$ 1,782.71	\$ (182.71)	111.40%
12801 531324 Membership Dues	\$ 500.00	\$ -	\$ 500.00	\$ 139.92	\$ 360.08	28.00%
12801 531326 Advertising	\$ 1,800.00	\$ -	\$ 1,800.00	\$ 601.08	\$ 1,198.92	33.40%
12801 531346 Clothing & Uniform	\$ 900.00	\$ -	\$ 900.00	\$ 718.00	\$ 182.00	79.80%
12801 531348 Educational Supplies	\$ 100.00	\$ -	\$ 100.00	\$ -	\$ 100.00	0.00%
12801 531351 Gas/Diesel	\$ 20,000.00	\$ -	\$ 20,000.00	\$ 17,022.34	\$ 2,977.66	85.10%
12801 532325 Registration	\$ 3,000.00	\$ -	\$ 3,000.00	\$ 1,575.52	\$ 1,424.48	52.50%
12801 532332 Mileage	\$ 500.00	\$ -	\$ 500.00	\$ 115.95	\$ 384.05	23.20%
12801 532335 Meals	\$ 200.00	\$ -	\$ 200.00	\$ 51.01	\$ 148.99	25.50%
12801 532336 Lodging	\$ 1,120.00	\$ -	\$ 1,120.00	\$ 955.23	\$ 164.77	85.30%
12801 532339 Other Travel & Tolls	\$ 30.00	\$ -	\$ 30.00	\$ -	\$ 30.00	0.00%
12801 533221 Water	\$ 400.00	\$ -	\$ 400.00	\$ 257.71	\$ 142.29	64.40%
12801 533222 Electric	\$ 3,700.00	\$ -	\$ 3,700.00	\$ 397.58	\$ 3,302.42	10.70%
12801 533223 Sewer	\$ -	\$ -	\$ -	\$ 245.73	\$ (245.73)	0.00%
12801 533225 Telephone & Fax	\$ 2,860.00	\$ -	\$ 2,860.00	\$ 1,816.81	\$ 1,043.19	63.50%
12801 533236 Wireless Internet	\$ -	\$ -	\$ -	\$ 105.14	\$ (105.14)	0.00%
12801 535232 Graveling	\$ 1,500.00	\$ -	\$ 1,500.00	\$ -	\$ 1,500.00	0.00%
12801 535242 Maintain Machinery & Equip	\$ 14,000.00	\$ -	\$ 14,000.00	\$ 6,628.73	\$ 7,371.27	47.30%
12801 535245 Grounds Improvements	\$ 26,617.00	\$ -	\$ 26,616.92	\$ 2,127.58	\$ 24,489.34	8.00%
12801 535247 Building Repair & Maint	\$ 3,000.00	\$ -	\$ 3,000.00	\$ 2.37	\$ 2,997.63	0.10%
12801 535297 Refuse Collection	\$ 2,500.00	\$ -	\$ 2,500.00	\$ 1,282.80	\$ 1,217.20	51.30%
12801 535344 Household & Janitorial Supp	\$ 5,000.00	\$ -	\$ 5,000.00	\$ 3,984.99	\$ 1,015.01	79.70%
12801 535349 Other Supplies	\$ 11,500.00	\$ -	\$ 11,500.00	\$ 7,065.06	\$ 4,434.94	61.40%
12801 535352 Vehicle Parts & Repairs	\$ 6,500.00	\$ -	\$ 6,500.00	\$ 1,927.13	\$ 4,572.87	29.60%

12801 536533 Equipment Rent & Lease	\$	4,500.00	\$	-	\$	4,500.00	\$	260.00	\$	<b>4,240.00</b>	5.80%
12801 571004 IP Telephony Allocation	\$	353.00	\$	-	\$	353.00	\$	323.62	\$	<b>29.38</b>	91.70%
12801 571005 Duplicating Allocation	\$	852.00	\$	-	\$	852.00	\$	781.00	\$	<b>71.00</b>	91.70%
12801 571009 MIS PC Group Allocation	\$	7,500.00	\$	-	\$	7,500.00	\$	6,875.00	\$	<b>625.00</b>	91.70%
12801 571010 MIS Systems Grp Alloc(ISIS)	\$	7,159.00	\$	-	\$	7,159.00	\$	6,562.38	\$	<b>596.62</b>	91.70%
12801 591519 Other Insurance	\$	12,835.00	\$	-	\$	12,835.42	\$	9,987.50	\$	<b>2,847.92</b>	77.80%
12801 594810 Capital Equipment	\$	134,000.00	\$	128,408.13	\$	262,408.13	\$	74,081.13	\$	<b>124,887.19</b>	52.40%
12801 594811 Capital Automobiles	\$	60,000.00	\$	-	\$	60,000.00	\$	58,820.31	\$	<b>1,179.69</b>	98.00%
12801 594821 Capital Improvement Land	\$	-	\$	8,800.00	\$	8,800.00	\$	-	\$	<b>8,800.00</b>	0.00%
12801 699999 Budgetary Fund Balance	\$	(146,500.00)	\$	(102,300.00)	\$	(248,800.00)	\$	-	\$	<b>(248,800.00)</b>	0.00%
<b>TOTAL Parks Department</b>	\$	<b>1.00</b>	\$	<b>34,908.13</b>	\$	<b>34,908.13</b>	\$	<b>(32,375.28)</b>	\$	<b>3,843.60</b>	<b>-92.70%</b>

**12802 Carol Liddle Fund**

12802 481099 Capital Interest & Dividends	\$	-	\$	-	\$	-	\$	(272.96)	\$	<b>272.96</b>	0.00%
12802 594960 Capital Reserve	\$	-	\$	58,612.36	\$	58,612.36	\$	-	\$	<b>58,612.36</b>	0.00%
12802 699800 Resv Applied Capital	\$	-	\$	(58,612.36)	\$	(58,612.36)	\$	-	\$	<b>(58,612.36)</b>	0.00%
<b>TOTAL Carol Liddle Fund</b>	\$	-	\$	-	\$	-	\$	<b>(272.96)</b>	\$	<b>272.96</b>	<b>0.00%</b>

**12803 Carlin Weld Park Trust**

12803 457017 Park Shelter Rental Fees	\$	-	\$	-	\$	-	\$	(587.67)	\$	<b>587.67</b>	0.00%
12803 485200 Donations Restricted	\$	-	\$	-	\$	-	\$	(37.00)	\$	<b>37.00</b>	0.00%
12803 511210 Wages-Regular	\$	-	\$	-	\$	-	\$	2,619.77	\$	<b>(2,619.77)</b>	0.00%
12803 511220 Wages-Overtime	\$	-	\$	-	\$	-	\$	38.76	\$	<b>(38.76)</b>	0.00%
12803 511240 Wages-Temporary	\$	-	\$	-	\$	-	\$	240.98	\$	<b>(240.98)</b>	0.00%
12803 512141 Social Security	\$	-	\$	-	\$	-	\$	220.10	\$	<b>(220.10)</b>	0.00%
12803 512142 Retirement (Employer)	\$	-	\$	-	\$	-	\$	110.56	\$	<b>(110.56)</b>	0.00%
12803 512144 Health Insurance	\$	-	\$	-	\$	-	\$	90.87	\$	<b>(90.87)</b>	0.00%
12803 512145 Life Insurance	\$	-	\$	-	\$	-	\$	0.51	\$	<b>(0.51)</b>	0.00%
12803 512151 HSA Contribution	\$	-	\$	-	\$	-	\$	6.73	\$	<b>(6.73)</b>	0.00%
12803 512173 Dental Insurance	\$	-	\$	-	\$	-	\$	32.45	\$	<b>(32.45)</b>	0.00%
12803 521219 Other Professional Serv	\$	-	\$	-	\$	-	\$	123.75	\$	<b>(123.75)</b>	0.00%
12803 533222 Electric	\$	-	\$	-	\$	-	\$	175.91	\$	<b>(175.91)</b>	0.00%
12803 535245 Grounds Improvements	\$	-	\$	-	\$	-	\$	40.00	\$	<b>(40.00)</b>	0.00%
12803 535349 Other Supplies	\$	-	\$	-	\$	-	\$	18.32	\$	<b>(18.32)</b>	0.00%
12803 591519 Other Insurance	\$	-	\$	-	\$	-	\$	95.70	\$	<b>(95.70)</b>	0.00%
12803 594950 Operating Reserve	\$	-	\$	4,523.71	\$	4,523.71	\$	-	\$	<b>4,523.71</b>	0.00%
12803 699700 Resv Applied Operating	\$	-	\$	(4,523.71)	\$	(4,523.71)	\$	-	\$	<b>(4,523.71)</b>	0.00%
<b>TOTAL Carlin Weld Park Trust</b>	\$	-	\$	-	\$	-	\$	<b>3,189.74</b>	\$	<b>(3,189.74)</b>	<b>0.00%</b>

**12804 Korth Park Development**

12804 457017 Park Shelter Rental Fees	\$	-	\$	-	\$	-	\$	(13,486.54)	\$	<b>13,486.54</b>	0.00%
12804 457019 Park Shelter Deposits	\$	-	\$	-	\$	-	\$	(9,900.00)	\$	<b>9,900.00</b>	0.00%
12804 485200 Donations Restricted	\$	-	\$	-	\$	-	\$	(5.00)	\$	<b>5.00</b>	0.00%
12804 511210 Wages-Regular	\$	-	\$	-	\$	-	\$	6,997.59	\$	<b>(6,997.59)</b>	0.00%
12804 511220 Wages-Overtime	\$	-	\$	-	\$	-	\$	136.59	\$	<b>(136.59)</b>	0.00%
12804 511240 Wages-Temporary	\$	-	\$	-	\$	-	\$	546.70	\$	<b>(546.70)</b>	0.00%
12804 512141 Social Security	\$	-	\$	-	\$	-	\$	583.24	\$	<b>(583.24)</b>	0.00%
12804 512142 Retirement (Employer)	\$	-	\$	-	\$	-	\$	327.85	\$	<b>(327.85)</b>	0.00%
12804 512144 Health Insurance	\$	-	\$	-	\$	-	\$	560.02	\$	<b>(560.02)</b>	0.00%
12804 512145 Life Insurance	\$	-	\$	-	\$	-	\$	3.06	\$	<b>(3.06)</b>	0.00%
12804 512151 HSA Contribution	\$	-	\$	-	\$	-	\$	59.18	\$	<b>(59.18)</b>	0.00%
12804 512173 Dental Insurance	\$	-	\$	-	\$	-	\$	42.59	\$	<b>(42.59)</b>	0.00%
12804 521219 Other Professional Serv	\$	-	\$	-	\$	-	\$	208.75	\$	<b>(208.75)</b>	0.00%
12804 533222 Electric	\$	-	\$	-	\$	-	\$	318.98	\$	<b>(318.98)</b>	0.00%
12804 535232 Graveling	\$	-	\$	-	\$	-	\$	138.92	\$	<b>(138.92)</b>	0.00%
12804 535247 Building Repair & Maint	\$	-	\$	-	\$	-	\$	743.19	\$	<b>(743.19)</b>	0.00%
12804 535349 Other Supplies	\$	-	\$	-	\$	-	\$	112.90	\$	<b>(112.90)</b>	0.00%
12804 535360 Repair & Maintenance	\$	-	\$	-	\$	-	\$	116.00	\$	<b>(116.00)</b>	0.00%
12804 536533 Equipment Rent & Lease	\$	-	\$	-	\$	-	\$	506.84	\$	<b>(506.84)</b>	0.00%
12804 591519 Other Insurance	\$	-	\$	-	\$	-	\$	348.70	\$	<b>(348.70)</b>	0.00%
12804 594808 Capital Land	\$	-	\$	112,500.00	\$	112,500.00	\$	-	\$	<b>112,500.00</b>	0.00%
12804 594821 Capital Improvement Land	\$	5,000.00	\$	-	\$	5,000.00	\$	61.00	\$	<b>(4,693.38)</b>	193.90%
12804 594822 Capital Improvement Building	\$	-	\$	20,000.00	\$	20,000.00	\$	-	\$	<b>20,000.00</b>	0.00%
12804 699999 Budgetary Fund Balance	\$	(5,000.00)	\$	(112,500.00)	\$	(117,500.00)	\$	-	\$	<b>(117,500.00)</b>	0.00%
<b>TOTAL Korth Park Development</b>	\$	-	\$	<b>20,000.00</b>	\$	<b>20,000.00</b>	\$	<b>(11,579.44)</b>	\$	<b>21,947.06</b>	<b>-57.90%</b>

<b>12805 Carnes Park Development</b>											
12805 457017 Park Shelter Rental Fees	\$	-	\$	-	\$	-	\$	(1,999.97)	\$	<b>1,999.97</b>	0.00%
12805 457019 Park Shelter Deposits	\$	-	\$	-	\$	-	\$	(1,300.00)	\$	<b>1,300.00</b>	0.00%
12805 457024 Camping Fees	\$	-	\$	-	\$	-	\$	(1,031.37)	\$	<b>1,031.37</b>	0.00%
12805 482002 Rent Of County Property	\$	(23,560.00)	\$	-	\$	(23,560.00)	\$	(11,780.00)	\$	<b>(11,780.00)</b>	50.00%
12805 483002 Misc Sale/Material & Supply	\$	-	\$	-	\$	-	\$	(6.28)	\$	<b>6.28</b>	0.00%
12805 485200 Donations Restricted	\$	-	\$	-	\$	-	\$	(2,559.50)	\$	<b>2,559.50</b>	0.00%
12805 485200 28156 Donations Restricted	\$	-	\$	-	\$	-	\$	(2,026.00)	\$	<b>2,026.00</b>	0.00%
12805 511210 Wages-Regular	\$	-	\$	-	\$	-	\$	7,391.90	\$	<b>(7,391.90)</b>	0.00%
12805 511220 Wages-Overtime	\$	-	\$	-	\$	-	\$	84.37	\$	<b>(84.37)</b>	0.00%
12805 511240 Wages-Temporary	\$	-	\$	-	\$	-	\$	459.27	\$	<b>(459.27)</b>	0.00%
12805 512141 Social Security	\$	-	\$	-	\$	-	\$	599.97	\$	<b>(599.97)</b>	0.00%
12805 512142 Retirement (Employer)	\$	-	\$	-	\$	-	\$	325.50	\$	<b>(325.50)</b>	0.00%
12805 512144 Health Insurance	\$	-	\$	-	\$	-	\$	496.06	\$	<b>(496.06)</b>	0.00%
12805 512145 Life Insurance	\$	-	\$	-	\$	-	\$	1.83	\$	<b>(1.83)</b>	0.00%
12805 512151 HSA Contribution	\$	-	\$	-	\$	-	\$	33.53	\$	<b>(33.53)</b>	0.00%
12805 512173 Dental Insurance	\$	-	\$	-	\$	-	\$	87.12	\$	<b>(87.12)</b>	0.00%
12805 521219 Other Professional Serv	\$	-	\$	-	\$	-	\$	93.75	\$	<b>(93.75)</b>	0.00%
12805 531100 Permits Purchased	\$	-	\$	-	\$	-	\$	201.00	\$	<b>(201.00)</b>	0.00%
12805 533222 Electric	\$	-	\$	-	\$	-	\$	398.08	\$	<b>(398.08)</b>	0.00%
12805 535245 Grounds Improvements	\$	80,000.00	\$	-	\$	80,000.00	\$	9,004.02	\$	<b>70,995.98</b>	11.30%
12805 535349 Other Supplies	\$	-	\$	-	\$	-	\$	149.66	\$	<b>(149.66)</b>	0.00%
12805 536533 Equipment Rent & Lease	\$	-	\$	-	\$	-	\$	660.00	\$	<b>(660.00)</b>	0.00%
12805 591519 Other Insurance	\$	-	\$	-	\$	-	\$	509.74	\$	<b>(509.74)</b>	0.00%
12805 594821 28151 Capital Improvement Land	\$	-	\$	5,000.00	\$	5,000.00	\$	-	\$	<b>5,000.00</b>	0.00%
12805 594821 28152 Capital Improvement Land	\$	-	\$	1,050.00	\$	1,050.00	\$	-	\$	<b>1,050.00</b>	0.00%
12805 594821 28154 Capital Improvement Land	\$	-	\$	10,000.00	\$	10,000.00	\$	-	\$	<b>10,000.00</b>	0.00%
12805 594821 28155 Capital Improvement Land	\$	-	\$	950.00	\$	950.00	\$	-	\$	<b>950.00</b>	0.00%
12805 594821 28156 Capital Improvement Land	\$	-	\$	10,410.00	\$	10,410.00	\$	-	\$	<b>10,410.00</b>	0.00%
12805 594822 28153 Capital Improvement Building	\$	-	\$	10,000.00	\$	10,000.00	\$	-	\$	<b>10,000.00</b>	0.00%
12805 594950 Operating Reserve	\$	200,966.00	\$	1,573.35	\$	202,539.53	\$	-	\$	<b>202,539.53</b>	0.00%
12805 699700 Resv Applied Operating	\$	(257,406.00)	\$	(1,573.35)	\$	(258,979.53)	\$	-	\$	<b>(258,979.53)</b>	0.00%
12805 699700 28151 Resv Applied Operating	\$	-	\$	(5,000.00)	\$	(5,000.00)	\$	-	\$	<b>(5,000.00)</b>	0.00%
12805 699700 28152 Resv Applied Operating	\$	-	\$	(1,050.00)	\$	(1,050.00)	\$	-	\$	<b>(1,050.00)</b>	0.00%
12805 699700 28153 Resv Applied Operating	\$	-	\$	(10,000.00)	\$	(10,000.00)	\$	-	\$	<b>(10,000.00)</b>	0.00%
12805 699700 28154 Resv Applied Operating	\$	-	\$	(10,000.00)	\$	(10,000.00)	\$	-	\$	<b>(10,000.00)</b>	0.00%
12805 699700 28155 Resv Applied Operating	\$	-	\$	(950.00)	\$	(950.00)	\$	-	\$	<b>(950.00)</b>	0.00%
12805 699700 28156 Resv Applied Operating	\$	-	\$	(10,410.00)	\$	(10,410.00)	\$	-	\$	<b>(10,410.00)</b>	0.00%
<b>TOTAL Carnes Park Development</b>	\$	-	\$	-	\$	-	\$	<b>(207.32)</b>	\$	<b>207.32</b>	<b>0.00%</b>

<b>12806 Parks Building</b>											
12806 411100 General Property Taxes	\$	(18,657.00)	\$	-	\$	(18,656.65)	\$	(10,883.04)	\$	<b>(7,773.61)</b>	58.30%
12806 511210 Wages-Regular	\$	-	\$	-	\$	-	\$	99.32	\$	<b>(99.32)</b>	0.00%
12806 511220 Wages-Overtime	\$	-	\$	-	\$	-	\$	19.38	\$	<b>(19.38)</b>	0.00%
12806 512141 Social Security	\$	-	\$	-	\$	-	\$	9.08	\$	<b>(9.08)</b>	0.00%
12806 521219 Other Professional Serv	\$	150.00	\$	-	\$	150.00	\$	-	\$	<b>150.00</b>	0.00%
12806 531302 Building & Maint Equipment	\$	1,000.00	\$	1,000.00	\$	2,000.00	\$	1,031.50	\$	<b>968.50</b>	51.60%
12806 531314 Small Items Of Equipment	\$	700.00	\$	-	\$	700.00	\$	-	\$	<b>700.00</b>	0.00%
12806 531351 Gas/Diesel	\$	3,000.00	\$	-	\$	3,000.00	\$	-	\$	<b>3,000.00</b>	0.00%
12806 533221 Water	\$	1,200.00	\$	-	\$	1,200.00	\$	601.58	\$	<b>598.42</b>	50.10%
12806 533222 Electric	\$	5,000.00	\$	-	\$	5,000.00	\$	3,151.71	\$	<b>1,848.29</b>	63.00%
12806 533223 Sewer	\$	1,200.00	\$	-	\$	1,200.00	\$	615.74	\$	<b>584.26</b>	51.30%
12806 533224 Natural Gas	\$	1,000.00	\$	-	\$	1,000.00	\$	407.69	\$	<b>592.31</b>	40.80%
12806 533235 Storm Water Utility	\$	775.00	\$	-	\$	775.00	\$	478.94	\$	<b>296.06</b>	61.80%
12806 533236 Wireless Internet	\$	450.00	\$	-	\$	450.00	\$	784.38	\$	<b>(334.38)</b>	174.30%
12806 535242 Maintain Machinery & Equip	\$	1,500.00	\$	-	\$	1,500.00	\$	162.00	\$	<b>1,338.00</b>	10.80%
12806 535246 Building Service & Maint	\$	-	\$	-	\$	-	\$	79.92	\$	<b>(79.92)</b>	0.00%
12806 535247 Building Repair & Maint	\$	-	\$	-	\$	-	\$	1,365.03	\$	<b>(1,365.03)</b>	0.00%
12806 535349 Other Supplies	\$	200.00	\$	-	\$	200.00	\$	-	\$	<b>200.00</b>	0.00%
12806 591519 Other Insurance	\$	2,482.00	\$	-	\$	2,481.65	\$	1,905.42	\$	<b>576.23</b>	76.80%
<b>TOTAL Parks Building</b>	\$	-	\$	<b>1,000.00</b>	\$	<b>1,000.00</b>	\$	<b>(171.35)</b>	\$	<b>1,171.35</b>	<b>-17.10%</b>

<b>12807 Garman Nature Preserve</b>											
12807 485200 Donations Restricted	\$	-	\$	-	\$	-	\$	(17.00)	\$	<b>17.00</b>	0.00%

12807 511210 Wages-Regular	\$	-	\$	-	\$	-	\$	3,183.43	\$	(3,183.43)	0.00%
12807 511220 Wages-Overtime	\$	-	\$	-	\$	-	\$	39.54	\$	(39.54)	0.00%
12807 511240 Wages-Temporary	\$	-	\$	-	\$	-	\$	12.04	\$	(12.04)	0.00%
12807 512141 Social Security	\$	-	\$	-	\$	-	\$	244.36	\$	(244.36)	0.00%
12807 512142 Retirement (Employer)	\$	-	\$	-	\$	-	\$	159.96	\$	(159.96)	0.00%
12807 512144 Health Insurance	\$	-	\$	-	\$	-	\$	293.92	\$	(293.92)	0.00%
12807 512145 Life Insurance	\$	-	\$	-	\$	-	\$	0.58	\$	(0.58)	0.00%
12807 512151 HSA Contribution	\$	-	\$	-	\$	-	\$	57.79	\$	(57.79)	0.00%
12807 512173 Dental Insurance	\$	-	\$	-	\$	-	\$	34.65	\$	(34.65)	0.00%
12807 521219 Other Professional Serv	\$	-	\$	-	\$	-	\$	750.00	\$	(750.00)	0.00%
12807 535245 Grounds Improvements	\$	28,000.00	\$	-	\$	28,000.00	\$	22,647.11	\$	(10,368.03)	137.00%
12807 591519 Other Insurance	\$	-	\$	-	\$	-	\$	81.73	\$	(81.73)	0.00%
12807 594950 Operating Reserve	\$	-	\$	10,596.60	\$	10,596.60	\$	-	\$	10,596.60	0.00%
12807 699700 Resv Applied Operating	\$	(28,000.00)	\$	(10,596.60)	\$	(38,596.60)	\$	-	\$	(38,596.60)	0.00%
<b>TOTAL Garman Nature Preserve</b>	\$	-	\$	-	\$	-	\$	<b>27,488.11</b>	\$	<b>(43,209.03)</b>	<b>0.00%</b>

**12808 Glacial Heritage Development**

12808 594821 Capital Improvement Land	\$	-	\$	10,000.00	\$	10,000.00	\$	-	\$	10,000.00	0.00%
12808 594950 Operating Reserve	\$	4,436.00	\$	15,000.00	\$	19,436.42	\$	-	\$	19,436.42	0.00%
12808 699700 Resv Applied Operating	\$	(4,436.00)	\$	(15,000.00)	\$	(19,436.42)	\$	-	\$	(19,436.42)	0.00%
<b>TOTAL Glacial Heritage Develop</b>	\$	-	\$	<b>10,000.00</b>	\$	<b>10,000.00</b>	\$	-	\$	<b>10,000.00</b>	<b>0.00%</b>

**12808802 Glacial Heritage Area Watertra**

12808802 511210 Wages-Regular	\$	-	\$	-	\$	-	\$	488.13	\$	(488.13)	0.00%
12808802 511220 Wages-Overtime	\$	-	\$	-	\$	-	\$	7.44	\$	(7.44)	0.00%
12808802 511240 Wages-Temporary	\$	-	\$	-	\$	-	\$	26.25	\$	(26.25)	0.00%
12808802 512141 Social Security	\$	-	\$	-	\$	-	\$	39.69	\$	(39.69)	0.00%
12808802 512142 Retirement (Employer)	\$	-	\$	-	\$	-	\$	15.38	\$	(15.38)	0.00%
12808802 512144 Health Insurance	\$	-	\$	-	\$	-	\$	26.34	\$	(26.34)	0.00%
12808802 512145 Life Insurance	\$	-	\$	-	\$	-	\$	0.02	\$	(0.02)	0.00%
12808802 512173 Dental Insurance	\$	-	\$	-	\$	-	\$	6.95	\$	(6.95)	0.00%
<b>TOTAL Glacial Heritage Area Wa</b>	\$	-	\$	-	\$	-	\$	<b>610.20</b>	\$	<b>(610.20)</b>	<b>0.00%</b>

**12809 Snowmobile Trails**

12809 421001 State Aid	\$	(57,210.00)	\$	-	\$	(57,210.00)	\$	-	\$	(57,210.00)	0.00%
12809 532325 Registration	\$	-	\$	-	\$	-	\$	5.00	\$	(5.00)	0.00%
12809 535245 Grounds Improvements	\$	57,210.00	\$	-	\$	57,210.00	\$	46,571.38	\$	10,638.62	81.40%
12809 535349 Other Supplies	\$	-	\$	-	\$	-	\$	3,546.20	\$	(3,546.20)	0.00%
12809 591519 Other Insurance	\$	-	\$	-	\$	-	\$	450.12	\$	(450.12)	0.00%
12809 594821 Capital Improvement Land	\$	-	\$	-	\$	-	\$	-	\$	(49,600.00)	0.00%
<b>TOTAL Snowmobile Trails</b>	\$	-	\$	-	\$	-	\$	<b>50,572.70</b>	\$	<b>(100,172.70)</b>	<b>0.00%</b>

**12810 Bike Trails**

12810 485200 Donations Restricted	\$	-	\$	-	\$	-	\$	(751.06)	\$	751.06	0.00%
12810 594821 28102 Capital Improvement Land	\$	-	\$	4,056.24	\$	4,056.24	\$	-	\$	4,056.24	0.00%
12810 699800 28102 Resv Applied Capital	\$	-	\$	(4,056.24)	\$	(4,056.24)	\$	-	\$	(4,056.24)	0.00%
<b>TOTAL Bike Trails</b>	\$	-	\$	-	\$	-	\$	<b>(751.06)</b>	\$	<b>751.06</b>	<b>0.00%</b>

**12810804 Glacial River Bike Trail**

12810804 485200 Donations Restricted	\$	-	\$	-	\$	-	\$	(250.00)	\$	250.00	0.00%
12810804 511210 Wages-Regular	\$	-	\$	-	\$	-	\$	2,937.46	\$	(2,937.46)	0.00%
12810804 511220 Wages-Overtime	\$	-	\$	-	\$	-	\$	20.89	\$	(20.89)	0.00%
12810804 511240 Wages-Temporary	\$	-	\$	-	\$	-	\$	101.25	\$	(101.25)	0.00%
12810804 512141 Social Security	\$	-	\$	-	\$	-	\$	231.49	\$	(231.49)	0.00%
12810804 512142 Retirement (Employer)	\$	-	\$	-	\$	-	\$	141.27	\$	(141.27)	0.00%
12810804 512144 Health Insurance	\$	-	\$	-	\$	-	\$	153.57	\$	(153.57)	0.00%
12810804 512145 Life Insurance	\$	-	\$	-	\$	-	\$	0.84	\$	(0.84)	0.00%
12810804 512151 HSA Contribution	\$	-	\$	-	\$	-	\$	5.77	\$	(5.77)	0.00%
12810804 512173 Dental Insurance	\$	-	\$	-	\$	-	\$	22.41	\$	(22.41)	0.00%
12810804 533221 Water	\$	-	\$	-	\$	-	\$	53.28	\$	(53.28)	0.00%
12810804 535245 Grounds Improvements	\$	-	\$	-	\$	-	\$	13.91	\$	(13.91)	0.00%
12810804 591519 Other Insurance	\$	-	\$	-	\$	-	\$	99.44	\$	(99.44)	0.00%
<b>TOTAL Glacial River Bike Trail</b>	\$	-	\$	-	\$	-	\$	<b>3,531.58</b>	\$	<b>(3,531.58)</b>	<b>0.00%</b>

**12810805 Interurban Bike Trail**

12810805 421001 28105 State Aid	\$	-	\$ (27,500.00)	\$ (27,500.00)	\$	-	\$ (27,500.00)	0.00%
12810805 421001 28109 State Aid	\$	-	\$ (655,252.00)	\$ (655,252.00)	\$	-	\$ (655,252.00)	0.00%
12810805 424001 28101 Federal Grants	\$	-	\$ (1,102,840.00)	\$ (1,102,840.00)	\$	-	\$ (1,102,840.00)	0.00%
12810805 485200 Donations Restricted	\$	-	\$ -	\$ -	\$	(50.00)	\$ 50.00	0.00%
12810805 511210 Wages-Regular	\$	-	\$ -	\$ -	\$	597.10	\$ (597.10)	0.00%
12810805 512141 Social Security	\$	-	\$ -	\$ -	\$	43.16	\$ (43.16)	0.00%
12810805 512142 Retirement (Employer)	\$	-	\$ -	\$ -	\$	38.25	\$ (38.25)	0.00%
12810805 512144 Health Insurance	\$	-	\$ -	\$ -	\$	173.79	\$ (173.79)	0.00%
12810805 512145 Life Insurance	\$	-	\$ -	\$ -	\$	0.24	\$ (0.24)	0.00%
12810805 512173 Dental Insurance	\$	-	\$ -	\$ -	\$	7.98	\$ (7.98)	0.00%
12810805 521219 Other Professional Serv	\$	-	\$ -	\$ -	\$	38,917.42	\$ (49,218.56)	0.00%
12810805 531100 Permits Purchased	\$	-	\$ -	\$ -	\$	30.00	\$ (30.00)	0.00%
12810805 531326 Advertising	\$	-	\$ -	\$ -	\$	1,108.00	\$ (1,108.00)	0.00%
12810805 594821 Capital Improvement Land	\$	-	\$ 188,534.97	\$ 188,534.97	\$	199,520.68	\$ (10,985.71)	105.80%
12810805 594821 28101 Capital Improvement Lan	\$	-	\$ 1,167,846.75	\$ 1,167,846.75	\$	124,929.60	\$ (310,101.14)	126.60%
12810805 594821 28105 Capital Improvement Lan	\$	-	\$ 253,799.00	\$ 253,799.00	\$	51,802.52	\$ 198,799.00	21.70%
12810805 594821 28109 Capital Improvement Lan	\$	-	\$ 655,252.00	\$ 655,252.00	\$	38,957.43	\$ 330,642.01	49.50%
12810805 594821 28111 Capital Improvement Lan	\$	-	\$ -	\$ -	\$	107.80	\$ (107.80)	0.00%
12810805 699700 Resv Applied Operating	\$	-	\$ (188,534.97)	\$ (188,534.97)	\$	-	\$ (188,534.97)	0.00%
12810805 699700 28101 Resv Applied Operating	\$	-	\$ (65,006.75)	\$ (65,006.75)	\$	-	\$ (65,006.75)	0.00%
12810805 699700 28105 Resv Applied Operating	\$	-	\$ (226,299.00)	\$ (226,299.00)	\$	-	\$ (226,299.00)	0.00%
<b>TOTAL Interurban Bike Trail</b>	\$	-	\$ -	\$ -	\$	<b>456,183.97</b>	\$ <b>(2,108,353.44)</b>	<b>0.00%</b>

**12810806 GRT MTB Trails**

12810806 511210 Wages-Regular	\$	-	\$ -	\$ -	\$	286.52	\$ (286.52)	0.00%
12810806 511240 Wages-Temporary	\$	-	\$ -	\$ -	\$	7.50	\$ (7.50)	0.00%
12810806 512141 Social Security	\$	-	\$ -	\$ -	\$	22.50	\$ (22.50)	0.00%
12810806 512142 Retirement (Employer)	\$	-	\$ -	\$ -	\$	0.35	\$ (0.35)	0.00%
12810806 512144 Health Insurance	\$	-	\$ -	\$ -	\$	2.13	\$ (2.13)	0.00%
<b>TOTAL GRT MTB Trails</b>	\$	-	\$ -	\$ -	\$	<b>319.00</b>	\$ <b>(319.00)</b>	<b>0.00%</b>

**12811 Dog Park**

12811 451038 Daily Permit Fees	\$	(5,000.00)	\$ -	\$ (5,000.00)	\$	(3,050.70)	\$ (1,949.30)	61.00%
12811 451039 Annual Permit Fees	\$	(36,252.00)	\$ -	\$ (36,252.07)	\$	(37,846.02)	\$ 1,593.95	104.40%
12811 457030 Credit Card Surcharge	\$	-	\$ -	\$ -	\$	(211.50)	\$ 211.50	0.00%
12811 485200 Donations Restricted	\$	-	\$ -	\$ -	\$	(2,401.91)	\$ 2,401.91	0.00%
12811 511210 Wages-Regular	\$	17,310.00	\$ -	\$ 17,309.58	\$	25,258.80	\$ (7,949.22)	145.90%
12811 511220 Wages-Overtime	\$	-	\$ -	\$ -	\$	57.54	\$ (57.54)	0.00%
12811 511240 Wages-Temporary	\$	7,707.00	\$ -	\$ 7,706.85	\$	158.68	\$ 7,548.17	2.10%
12811 512141 Social Security	\$	1,914.00	\$ -	\$ 1,913.75	\$	1,908.72	\$ 5.03	99.70%
12811 512142 Retirement (Employer)	\$	1,125.00	\$ -	\$ 1,125.12	\$	1,400.30	\$ (275.18)	124.50%
12811 512144 Health Insurance	\$	-	\$ -	\$ -	\$	1,462.89	\$ (1,462.89)	0.00%
12811 512145 Life Insurance	\$	20.00	\$ -	\$ 20.04	\$	15.05	\$ 4.99	75.10%
12811 512148 Unemployment Compensation	\$	2,500.00	\$ -	\$ 2,500.00	\$	2,216.00	\$ 284.00	88.60%
12811 512151 HSA Contribution	\$	-	\$ -	\$ -	\$	232.88	\$ (232.88)	0.00%
12811 512173 Dental Insurance	\$	-	\$ -	\$ -	\$	118.58	\$ (118.58)	0.00%
12811 521219 Other Professional Serv	\$	-	\$ -	\$ -	\$	30.00	\$ (30.00)	0.00%
12811 531311 Postage & Box Rent	\$	1,000.00	\$ -	\$ 1,000.00	\$	815.29	\$ 184.71	81.50%
12811 531313 Printing & Duplicating	\$	500.00	\$ -	\$ 500.00	\$	202.86	\$ 297.14	40.60%
12811 531314 Small Items Of Equipment	\$	250.00	\$ -	\$ 250.00	\$	-	\$ 250.00	0.00%
12811 533236 Wireless Internet	\$	480.00	\$ -	\$ 480.00	\$	280.07	\$ 199.93	58.30%
12811 535232 Graveling	\$	-	\$ -	\$ -	\$	63.54	\$ (63.54)	0.00%
12811 535242 Maintain Machinery & Equip	\$	-	\$ -	\$ -	\$	196.95	\$ (196.95)	0.00%
12811 535245 Grounds Improvements	\$	500.00	\$ 1,599.85	\$ 2,099.85	\$	106.50	\$ 393.50	81.30%
12811 535247 Building Repair & Maint	\$	-	\$ -	\$ -	\$	(197.65)	\$ 197.65	0.00%
12811 535297 Refuse Collection	\$	722.00	\$ -	\$ 722.00	\$	404.23	\$ 317.77	56.00%
12811 535344 Household & Janitorial Supp	\$	-	\$ -	\$ -	\$	839.76	\$ (839.76)	0.00%
12811 535349 Other Supplies	\$	3,500.00	\$ -	\$ 3,500.00	\$	976.70	\$ 2,523.30	27.90%
12811 571005 Duplicating Allocation	\$	1,331.00	\$ -	\$ 1,331.00	\$	1,220.12	\$ 110.88	91.70%
12811 571009 MIS PC Group Allocation	\$	1,250.00	\$ -	\$ 1,250.00	\$	1,145.87	\$ 104.13	91.70%
12811 571010 MIS Systems Grp Alloc(ISIS)	\$	527.00	\$ -	\$ 527.00	\$	483.12	\$ 43.88	91.70%
12811 591519 Other Insurance	\$	617.00	\$ -	\$ 616.73	\$	512.38	\$ 104.35	83.10%
12811 594821 Capital Improvement Land	\$	36,000.00	\$ 36,000.00	\$ 72,000.00	\$	-	\$ 72,000.00	0.00%
12811 594950 Operating Reserve	\$	3,410.00	\$ 16,046.83	\$ 19,456.88	\$	-	\$ 19,456.88	0.00%
12811 699992 Balance Forward Prior Year	\$	(39,410.00)	\$ (52,046.83)	\$ (91,456.88)	\$	-	\$ (91,456.88)	0.00%

<b>TOTAL Dog Park</b>	\$	<b>1.00</b>	\$	<b>1,599.85</b>	\$	<b>1,599.85</b>	\$	<b>(3,600.95)</b>	\$	<b>3,600.95</b>	<b>-225.10%</b>
<b>12812 Grounds Keeping</b>											
12812 411100 General Property Taxes	\$	(3,624.00)	\$	-	\$	(3,623.77)	\$	(2,113.86)	\$	(1,509.91)	58.30%
12812 474118 Parks Interdepartment Billed	\$	-	\$	-	\$	-	\$	(436.52)	\$	436.52	0.00%
12812 474119 Courthouse Interdepart Billed	\$	(13,550.00)	\$	-	\$	(13,550.14)	\$	(9,064.37)	\$	(4,485.77)	66.90%
12812 474150 Human Services Billed	\$	(17,049.00)	\$	-	\$	(17,048.83)	\$	(7,048.23)	\$	(10,000.60)	41.30%
12812 474169 Fair Billed	\$	(29,123.00)	\$	-	\$	(29,123.07)	\$	(10,013.69)	\$	(19,109.38)	34.40%
12812 474170 Land Conservation Billed	\$	(2,687.00)	\$	-	\$	(2,687.12)	\$	(511.70)	\$	(2,175.42)	19.00%
12812 474175 Highway Billed	\$	(11,920.00)	\$	-	\$	(11,920.33)	\$	(4,887.30)	\$	(7,033.03)	41.00%
12812 511210 Wages-Regular	\$	42,333.00	\$	-	\$	42,333.44	\$	-	\$	42,333.44	0.00%
12812 511220 Wages-Overtime	\$	66.00	\$	-	\$	66.18	\$	-	\$	66.18	0.00%
12812 511240 Wages-Temporary	\$	2,254.00	\$	-	\$	2,254.20	\$	-	\$	2,254.20	0.00%
12812 511330 Wages-Longevity Pay	\$	15.00	\$	-	\$	14.69	\$	-	\$	14.69	0.00%
12812 512141 Social Security	\$	3,400.00	\$	-	\$	3,399.59	\$	-	\$	3,399.59	0.00%
12812 512142 Retirement (Employer)	\$	1,791.00	\$	-	\$	1,791.33	\$	-	\$	1,791.33	0.00%
12812 512144 Health Insurance	\$	1,561.00	\$	-	\$	1,560.58	\$	-	\$	1,560.58	0.00%
12812 512145 Life Insurance	\$	1.00	\$	-	\$	1.18	\$	-	\$	1.18	0.00%
12812 512148 Unemployment Compensation	\$	4,225.00	\$	-	\$	4,225.00	\$	1,256.40	\$	2,968.60	29.70%
12812 512151 HSA Contribution	\$	131.00	\$	-	\$	131.25	\$	-	\$	131.25	0.00%
12812 512173 Dental Insurance	\$	112.00	\$	-	\$	111.96	\$	-	\$	111.96	0.00%
12812 531314 Small Items Of Equipment	\$	1,700.00	\$	-	\$	1,700.00	\$	499.00	\$	1,201.00	29.40%
12812 531320 Safety Supplies	\$	500.00	\$	-	\$	500.00	\$	150.00	\$	350.00	30.00%
12812 531326 Advertising	\$	162.00	\$	-	\$	162.00	\$	-	\$	162.00	0.00%
12812 531351 Gas/Diesel	\$	4,850.00	\$	-	\$	4,850.00	\$	4,902.86	\$	(52.86)	101.10%
12812 535242 Maintain Machinery & Equip	\$	3,200.00	\$	-	\$	3,200.00	\$	3,173.76	\$	26.24	99.20%
12812 535245 Grounds Improvements	\$	5,000.00	\$	-	\$	5,000.00	\$	34.00	\$	4,966.00	0.70%
12812 535349 Other Supplies	\$	3,000.00	\$	-	\$	3,000.00	\$	1,348.05	\$	1,651.95	44.90%
12812 535352 Vehicle Parts & Repairs	\$	1,000.00	\$	-	\$	1,000.00	\$	-	\$	1,000.00	0.00%
12812 536533 Equipment Rent & Lease	\$	300.00	\$	-	\$	300.00	\$	-	\$	300.00	0.00%
12812 571010 MIS Systems Grp Alloc(ISIS)	\$	688.00	\$	-	\$	688.00	\$	630.63	\$	57.37	91.70%
12812 591519 Other Insurance	\$	1,664.00	\$	-	\$	1,663.86	\$	1,628.66	\$	35.20	97.90%
<b>TOTAL Grounds Keeping</b>	\$	<b>-</b>	\$	<b>-</b>	\$	<b>-</b>	\$	<b>(20,452.31)</b>	\$	<b>20,452.31</b>	<b>0.00%</b>
<b>12812371 Facilities-Courthouse</b>											
12812371 511210 Wages-Regular	\$	-	\$	-	\$	-	\$	4,309.43	\$	(4,309.43)	0.00%
12812371 511240 Wages-Temporary	\$	-	\$	-	\$	-	\$	838.61	\$	(838.61)	0.00%
12812371 512141 Social Security	\$	-	\$	-	\$	-	\$	388.87	\$	(388.87)	0.00%
12812371 512142 Retirement (Employer)	\$	-	\$	-	\$	-	\$	153.10	\$	(153.10)	0.00%
12812371 512144 Health Insurance	\$	-	\$	-	\$	-	\$	418.18	\$	(418.18)	0.00%
12812371 512145 Life Insurance	\$	-	\$	-	\$	-	\$	0.83	\$	(0.83)	0.00%
12812371 512151 HSA Contribution	\$	-	\$	-	\$	-	\$	39.94	\$	(39.94)	0.00%
12812371 512173 Dental Insurance	\$	-	\$	-	\$	-	\$	38.87	\$	(38.87)	0.00%
12812371 521219 Other Professional Serv	\$	-	\$	-	\$	-	\$	241.97	\$	(241.97)	0.00%
12812371 531351 Gas/Diesel	\$	-	\$	-	\$	-	\$	34.00	\$	(34.00)	0.00%
12812371 535349 Other Supplies	\$	-	\$	-	\$	-	\$	2,279.00	\$	(2,279.00)	0.00%
<b>TOTAL Facilities-Courthouse</b>	\$	<b>-</b>	\$	<b>-</b>	\$	<b>-</b>	\$	<b>8,742.80</b>	\$	<b>(8,742.80)</b>	<b>0.00%</b>
<b>12812380 Facilities-Fair Park</b>											
12812380 511210 Wages-Regular	\$	-	\$	-	\$	-	\$	5,731.88	\$	(5,731.88)	0.00%
12812380 511240 Wages-Temporary	\$	-	\$	-	\$	-	\$	1,196.25	\$	(1,196.25)	0.00%
12812380 512141 Social Security	\$	-	\$	-	\$	-	\$	524.61	\$	(524.61)	0.00%
12812380 512142 Retirement (Employer)	\$	-	\$	-	\$	-	\$	230.23	\$	(230.23)	0.00%
12812380 512144 Health Insurance	\$	-	\$	-	\$	-	\$	706.10	\$	(706.10)	0.00%
12812380 512145 Life Insurance	\$	-	\$	-	\$	-	\$	1.50	\$	(1.50)	0.00%
12812380 512151 HSA Contribution	\$	-	\$	-	\$	-	\$	138.61	\$	(138.61)	0.00%
12812380 512173 Dental Insurance	\$	-	\$	-	\$	-	\$	72.25	\$	(72.25)	0.00%
12812380 535242 Maintain Machinery & Equip	\$	-	\$	-	\$	-	\$	923.90	\$	(923.90)	0.00%
12812380 535245 Grounds Improvements	\$	-	\$	-	\$	-	\$	418.00	\$	(418.00)	0.00%
<b>TOTAL Facilities-Fair Park</b>	\$	<b>-</b>	\$	<b>-</b>	\$	<b>-</b>	\$	<b>9,943.33</b>	\$	<b>(9,943.33)</b>	<b>0.00%</b>
<b>12812381 Facilities-Hwy</b>											
12812381 511210 Wages-Regular	\$	-	\$	-	\$	-	\$	2,624.13	\$	(2,624.13)	0.00%
12812381 511240 Wages-Temporary	\$	-	\$	-	\$	-	\$	1,046.25	\$	(1,046.25)	0.00%
12812381 512141 Social Security	\$	-	\$	-	\$	-	\$	279.46	\$	(279.46)	0.00%

12812381 512142 Retirement (Employer)	\$	-	\$	-	\$	-	\$	67.98	\$	(67.98)	0.00%
12812381 512144 Health Insurance	\$	-	\$	-	\$	-	\$	212.57	\$	(212.57)	0.00%
12812381 512145 Life Insurance	\$	-	\$	-	\$	-	\$	1.12	\$	(1.12)	0.00%
12812381 512173 Dental Insurance	\$	-	\$	-	\$	-	\$	2.91	\$	(2.91)	0.00%
12812381 521219 Other Professional Serv	\$	-	\$	-	\$	-	\$	198.72	\$	(198.72)	0.00%
<b>TOTAL Facilities-Hwy</b>	\$	-	\$	-	\$	-	\$	<b>4,433.14</b>	\$	<b>(4,433.14)</b>	<b>0.00%</b>

**12812383 Facilities-HHS & Lueder House**

12812383 511210 Wages-Regular	\$	-	\$	-	\$	-	\$	2,922.09	\$	(2,922.09)	0.00%
12812383 511240 Wages-Temporary	\$	-	\$	-	\$	-	\$	1,132.50	\$	(1,132.50)	0.00%
12812383 512141 Social Security	\$	-	\$	-	\$	-	\$	308.72	\$	(308.72)	0.00%
12812383 512142 Retirement (Employer)	\$	-	\$	-	\$	-	\$	70.09	\$	(70.09)	0.00%
12812383 512144 Health Insurance	\$	-	\$	-	\$	-	\$	186.23	\$	(186.23)	0.00%
12812383 512145 Life Insurance	\$	-	\$	-	\$	-	\$	0.73	\$	(0.73)	0.00%
12812383 512151 HSA Contribution	\$	-	\$	-	\$	-	\$	3.85	\$	(3.85)	0.00%
12812383 512173 Dental Insurance	\$	-	\$	-	\$	-	\$	11.40	\$	(11.40)	0.00%
12812383 521219 Other Professional Serv	\$	-	\$	-	\$	-	\$	336.14	\$	(336.14)	0.00%
<b>TOTAL Facilities-HHS &amp; Lueder</b>	\$	-	\$	-	\$	-	\$	<b>4,971.75</b>	\$	<b>(4,971.75)</b>	<b>0.00%</b>

**12812384 Grounds Keeping-Potters Field**

12812384 511210 Wages-Regular	\$	-	\$	-	\$	-	\$	153.26	\$	(153.26)	0.00%
12812384 511240 Wages-Temporary	\$	-	\$	-	\$	-	\$	63.75	\$	(63.75)	0.00%
12812384 512141 Social Security	\$	-	\$	-	\$	-	\$	16.60	\$	(16.60)	0.00%
12812384 512142 Retirement (Employer)	\$	-	\$	-	\$	-	\$	1.00	\$	(1.00)	0.00%
12812384 512144 Health Insurance	\$	-	\$	-	\$	-	\$	3.12	\$	(3.12)	0.00%
12812384 512173 Dental Insurance	\$	-	\$	-	\$	-	\$	0.49	\$	(0.49)	0.00%
<b>TOTAL Grounds Keeping-Potters</b>	\$	-	\$	-	\$	-	\$	<b>238.22</b>	\$	<b>(238.22)</b>	<b>0.00%</b>

**12812387 Facilities-MIS**

12812387 511210 Wages-Regular	\$	-	\$	-	\$	-	\$	105.40	\$	(105.40)	0.00%
12812387 512141 Social Security	\$	-	\$	-	\$	-	\$	8.03	\$	(8.03)	0.00%
12812387 512142 Retirement (Employer)	\$	-	\$	-	\$	-	\$	3.22	\$	(3.22)	0.00%
12812387 512144 Health Insurance	\$	-	\$	-	\$	-	\$	6.25	\$	(6.25)	0.00%
12812387 512145 Life Insurance	\$	-	\$	-	\$	-	\$	0.03	\$	(0.03)	0.00%
12812387 512173 Dental Insurance	\$	-	\$	-	\$	-	\$	0.97	\$	(0.97)	0.00%
<b>TOTAL Facilities-MIS</b>	\$	-	\$	-	\$	-	\$	<b>123.90</b>	\$	<b>(123.90)</b>	<b>0.00%</b>

**12812394 Facilites-UW-Ext & Wrk Dev**

12812394 511210 Wages-Regular	\$	-	\$	-	\$	-	\$	831.89	\$	(831.89)	0.00%
12812394 511240 Wages-Temporary	\$	-	\$	-	\$	-	\$	300.00	\$	(300.00)	0.00%
12812394 512141 Social Security	\$	-	\$	-	\$	-	\$	86.39	\$	(86.39)	0.00%
12812394 512142 Retirement (Employer)	\$	-	\$	-	\$	-	\$	15.51	\$	(15.51)	0.00%
12812394 512144 Health Insurance	\$	-	\$	-	\$	-	\$	35.75	\$	(35.75)	0.00%
12812394 512145 Life Insurance	\$	-	\$	-	\$	-	\$	0.22	\$	(0.22)	0.00%
12812394 512173 Dental Insurance	\$	-	\$	-	\$	-	\$	3.24	\$	(3.24)	0.00%
12812394 521219 Other Professional Serv	\$	-	\$	-	\$	-	\$	218.75	\$	(218.75)	0.00%
<b>TOTAL Facilites-UW-Ext &amp; Wrk D</b>	\$	-	\$	-	\$	-	\$	<b>1,491.75</b>	\$	<b>(1,491.75)</b>	<b>0.00%</b>

**12812396 Facilities-Sheriff Annex**

12812396 511210 Wages-Regular	\$	-	\$	-	\$	-	\$	378.47	\$	(378.47)	0.00%
12812396 511240 Wages-Temporary	\$	-	\$	-	\$	-	\$	7.50	\$	(7.50)	0.00%
12812396 512141 Social Security	\$	-	\$	-	\$	-	\$	29.05	\$	(29.05)	0.00%
12812396 512142 Retirement (Employer)	\$	-	\$	-	\$	-	\$	20.90	\$	(20.90)	0.00%
12812396 512144 Health Insurance	\$	-	\$	-	\$	-	\$	30.97	\$	(30.97)	0.00%
12812396 512145 Life Insurance	\$	-	\$	-	\$	-	\$	0.06	\$	(0.06)	0.00%
12812396 512151 HSA Contribution	\$	-	\$	-	\$	-	\$	2.88	\$	(2.88)	0.00%
12812396 512173 Dental Insurance	\$	-	\$	-	\$	-	\$	7.90	\$	(7.90)	0.00%
<b>TOTAL Facilities-Sheriff Annex</b>	\$	-	\$	-	\$	-	\$	<b>477.73</b>	\$	<b>(477.73)</b>	<b>0.00%</b>

**12812397 Facilities-Shooting Range**

12812397 511210 Wages-Regular	\$	-	\$	-	\$	-	\$	323.82	\$	(323.82)	0.00%
12812397 512141 Social Security	\$	-	\$	-	\$	-	\$	24.71	\$	(24.71)	0.00%
12812397 512142 Retirement (Employer)	\$	-	\$	-	\$	-	\$	14.24	\$	(14.24)	0.00%
12812397 512144 Health Insurance	\$	-	\$	-	\$	-	\$	14.36	\$	(14.36)	0.00%
12812397 512145 Life Insurance	\$	-	\$	-	\$	-	\$	0.03	\$	(0.03)	0.00%

12812397 512173 Dental Insurance	\$	-	\$	-	\$	-	\$	2.67	\$	(2.67)	0.00%
<b>TOTAL Facilities-Shooting Rang</b>	\$	-	\$	-	\$	-	\$	<b>379.83</b>	\$	<b>(379.83)</b>	<b>0.00%</b>
<b>12813 Flood Mitigation Prop Maint</b>											
12813 511210 Wages-Regular	\$	-	\$	-	\$	-	\$	1,017.55	\$	(1,017.55)	0.00%
12813 512141 Social Security	\$	-	\$	-	\$	-	\$	73.93	\$	(73.93)	0.00%
12813 512142 Retirement (Employer)	\$	-	\$	-	\$	-	\$	49.79	\$	(49.79)	0.00%
12813 512144 Health Insurance	\$	-	\$	-	\$	-	\$	97.37	\$	(97.37)	0.00%
12813 512151 HSA Contribution	\$	-	\$	-	\$	-	\$	15.62	\$	(15.62)	0.00%
12813 512173 Dental Insurance	\$	-	\$	-	\$	-	\$	7.56	\$	(7.56)	0.00%
12813 521220 Consultant	\$	-	\$	35,000.00	\$	35,000.00	\$	-	\$	35,000.00	0.00%
12813 699999 Budgetary Fund Balance	\$	-	\$	(35,000.00)	\$	(35,000.00)	\$	-	\$	(35,000.00)	0.00%
<b>TOTAL Flood Mitigation Prop Ma</b>	\$	-	\$	-	\$	-	\$	<b>1,261.82</b>	\$	<b>(1,261.82)</b>	<b>0.00%</b>
<b>12814 Altpeter County Park</b>											
12814 511210 Wages-Regular	\$	-	\$	-	\$	-	\$	525.90	\$	(525.90)	0.00%
12814 511240 Wages-Temporary	\$	-	\$	-	\$	-	\$	56.25	\$	(56.25)	0.00%
12814 512141 Social Security	\$	-	\$	-	\$	-	\$	44.11	\$	(44.11)	0.00%
12814 512142 Retirement (Employer)	\$	-	\$	-	\$	-	\$	24.74	\$	(24.74)	0.00%
12814 512144 Health Insurance	\$	-	\$	-	\$	-	\$	32.20	\$	(32.20)	0.00%
12814 512145 Life Insurance	\$	-	\$	-	\$	-	\$	0.12	\$	(0.12)	0.00%
12814 512151 HSA Contribution	\$	-	\$	-	\$	-	\$	1.92	\$	(1.92)	0.00%
12814 512173 Dental Insurance	\$	-	\$	-	\$	-	\$	5.60	\$	(5.60)	0.00%
12814 591519 Other Insurance	\$	-	\$	-	\$	-	\$	6.05	\$	(6.05)	0.00%
<b>TOTAL Altpeter County Park</b>	\$	-	\$	-	\$	-	\$	<b>696.89</b>	\$	<b>(696.89)</b>	<b>0.00%</b>
<b>12815 Blackhawk Island Fishing Wharf</b>											
12815 511210 Wages-Regular	\$	-	\$	-	\$	-	\$	919.03	\$	(919.03)	0.00%
12815 511240 Wages-Temporary	\$	-	\$	-	\$	-	\$	71.25	\$	(71.25)	0.00%
12815 512141 Social Security	\$	-	\$	-	\$	-	\$	75.04	\$	(75.04)	0.00%
12815 512142 Retirement (Employer)	\$	-	\$	-	\$	-	\$	43.42	\$	(43.42)	0.00%
12815 512144 Health Insurance	\$	-	\$	-	\$	-	\$	92.32	\$	(92.32)	0.00%
12815 512145 Life Insurance	\$	-	\$	-	\$	-	\$	0.12	\$	(0.12)	0.00%
12815 512173 Dental Insurance	\$	-	\$	-	\$	-	\$	20.28	\$	(20.28)	0.00%
12815 521219 Other Professional Serv	\$	-	\$	-	\$	-	\$	432.00	\$	(432.00)	0.00%
12815 535349 Other Supplies	\$	-	\$	-	\$	-	\$	11.90	\$	(11.90)	0.00%
<b>TOTAL Blackhawk Island Fishing</b>	\$	-	\$	-	\$	-	\$	<b>1,665.36</b>	\$	<b>(1,665.36)</b>	<b>0.00%</b>
<b>12816 Burnt Village Hist Site &amp; Lauc</b>											
12816 421001 State Aid	\$	(7,500.00)	\$	-	\$	(7,500.00)	\$	-	\$	(7,500.00)	0.00%
12816 485200 Donations Restricted	\$	(3,000.00)	\$	-	\$	(3,000.00)	\$	(31.00)	\$	(2,969.00)	1.00%
12816 511210 Wages-Regular	\$	-	\$	-	\$	-	\$	731.60	\$	(731.60)	0.00%
12816 511240 Wages-Temporary	\$	-	\$	-	\$	-	\$	41.25	\$	(41.25)	0.00%
12816 512141 Social Security	\$	-	\$	-	\$	-	\$	58.57	\$	(58.57)	0.00%
12816 512142 Retirement (Employer)	\$	-	\$	-	\$	-	\$	43.23	\$	(43.23)	0.00%
12816 512144 Health Insurance	\$	-	\$	-	\$	-	\$	45.56	\$	(45.56)	0.00%
12816 512145 Life Insurance	\$	-	\$	-	\$	-	\$	0.35	\$	(0.35)	0.00%
12816 512151 HSA Contribution	\$	-	\$	-	\$	-	\$	0.96	\$	(0.96)	0.00%
12816 512173 Dental Insurance	\$	-	\$	-	\$	-	\$	5.78	\$	(5.78)	0.00%
12816 536533 Equipment Rent & Lease	\$	-	\$	-	\$	-	\$	120.00	\$	(120.00)	0.00%
12816 591519 Other Insurance	\$	-	\$	-	\$	-	\$	11.66	\$	(11.66)	0.00%
12816 594821 Capital Improvement Land	\$	15,000.00	\$	-	\$	15,000.00	\$	-	\$	15,000.00	0.00%
12816 699999 Budgetary Fund Balance	\$	(4,500.00)	\$	-	\$	(4,500.00)	\$	-	\$	(4,500.00)	0.00%
<b>TOTAL Burnt Village Hist Site</b>	\$	-	\$	-	\$	-	\$	<b>1,027.96</b>	\$	<b>(1,027.96)</b>	<b>0.00%</b>
<b>12817 Cappies Landing</b>											
12817 457024 Camping Fees	\$	-	\$	-	\$	-	\$	(498.69)	\$	498.69	0.00%
12817 485200 Donations Restricted	\$	-	\$	-	\$	-	\$	(8.83)	\$	8.83	0.00%
12817 511210 Wages-Regular	\$	-	\$	-	\$	-	\$	2,019.81	\$	(2,019.81)	0.00%
12817 511220 Wages-Overtime	\$	-	\$	-	\$	-	\$	64.60	\$	(64.60)	0.00%
12817 511240 Wages-Temporary	\$	-	\$	-	\$	-	\$	143.29	\$	(143.29)	0.00%
12817 512141 Social Security	\$	-	\$	-	\$	-	\$	168.48	\$	(168.48)	0.00%
12817 512142 Retirement (Employer)	\$	-	\$	-	\$	-	\$	92.47	\$	(92.47)	0.00%
12817 512144 Health Insurance	\$	-	\$	-	\$	-	\$	217.52	\$	(217.52)	0.00%
12817 512145 Life Insurance	\$	-	\$	-	\$	-	\$	0.69	\$	(0.69)	0.00%



12817 512151 HSA Contribution	\$	-	\$	-	\$	-	\$	18.32	\$	(18.32)	0.00%
12817 512173 Dental Insurance	\$	-	\$	-	\$	-	\$	14.93	\$	(14.93)	0.00%
12817 521219 Other Professional Serv	\$	-	\$	-	\$	-	\$	30.00	\$	(30.00)	0.00%
12817 531100 Permits Purchased	\$	-	\$	-	\$	-	\$	201.00	\$	(201.00)	0.00%
12817 535245 Grounds Improvements	\$	-	\$	-	\$	-	\$	200.05	\$	(200.05)	0.00%
12817 591519 Other Insurance	\$	-	\$	-	\$	-	\$	10.67	\$	(10.67)	0.00%
<b>TOTAL Cappies Landing</b>	\$	-	\$	-	\$	-	\$	<b>2,674.31</b>	\$	<b>(2,674.31)</b>	<b>0.00%</b>

**12818 Cold Spring Creamery**

12818 511210 Wages-Regular	\$	-	\$	-	\$	-	\$	502.11	\$	(502.11)	0.00%
12818 511220 Wages-Overtime	\$	-	\$	-	\$	-	\$	6.46	\$	(6.46)	0.00%
12818 511240 Wages-Temporary	\$	-	\$	-	\$	-	\$	45.00	\$	(45.00)	0.00%
12818 512141 Social Security	\$	-	\$	-	\$	-	\$	41.97	\$	(41.97)	0.00%
12818 512142 Retirement (Employer)	\$	-	\$	-	\$	-	\$	20.51	\$	(20.51)	0.00%
12818 512144 Health Insurance	\$	-	\$	-	\$	-	\$	17.43	\$	(17.43)	0.00%
12818 512145 Life Insurance	\$	-	\$	-	\$	-	\$	0.15	\$	(0.15)	0.00%
12818 512151 HSA Contribution	\$	-	\$	-	\$	-	\$	1.92	\$	(1.92)	0.00%
12818 512173 Dental Insurance	\$	-	\$	-	\$	-	\$	4.69	\$	(4.69)	0.00%
12818 591519 Other Insurance	\$	-	\$	-	\$	-	\$	28.60	\$	(28.60)	0.00%
<b>TOTAL Cold Spring Creamery</b>	\$	-	\$	-	\$	-	\$	<b>668.84</b>	\$	<b>(668.84)</b>	<b>0.00%</b>

**12819 Crawfish River Park**

12819 511210 Wages-Regular	\$	-	\$	-	\$	-	\$	312.22	\$	(312.22)	0.00%
12819 511220 Wages-Overtime	\$	-	\$	-	\$	-	\$	43.78	\$	(43.78)	0.00%
12819 512141 Social Security	\$	-	\$	-	\$	-	\$	27.05	\$	(27.05)	0.00%
12819 512142 Retirement (Employer)	\$	-	\$	-	\$	-	\$	23.15	\$	(23.15)	0.00%
12819 512144 Health Insurance	\$	-	\$	-	\$	-	\$	20.44	\$	(20.44)	0.00%
12819 512145 Life Insurance	\$	-	\$	-	\$	-	\$	0.04	\$	(0.04)	0.00%
12819 512173 Dental Insurance	\$	-	\$	-	\$	-	\$	7.00	\$	(7.00)	0.00%
<b>TOTAL Crawfish River Park</b>	\$	-	\$	-	\$	-	\$	<b>433.68</b>	\$	<b>(433.68)</b>	<b>0.00%</b>

**12820 Hwy 16 Landing**

12820 511210 Wages-Regular	\$	-	\$	-	\$	-	\$	817.63	\$	(817.63)	0.00%
12820 511220 Wages-Overtime	\$	-	\$	-	\$	-	\$	42.72	\$	(42.72)	0.00%
12820 511240 Wages-Temporary	\$	-	\$	-	\$	-	\$	120.00	\$	(120.00)	0.00%
12820 512141 Social Security	\$	-	\$	-	\$	-	\$	74.48	\$	(74.48)	0.00%
12820 512142 Retirement (Employer)	\$	-	\$	-	\$	-	\$	32.61	\$	(32.61)	0.00%
12820 512144 Health Insurance	\$	-	\$	-	\$	-	\$	74.34	\$	(74.34)	0.00%
12820 512145 Life Insurance	\$	-	\$	-	\$	-	\$	0.23	\$	(0.23)	0.00%
12820 512151 HSA Contribution	\$	-	\$	-	\$	-	\$	8.68	\$	(8.68)	0.00%
12820 512173 Dental Insurance	\$	-	\$	-	\$	-	\$	6.56	\$	(6.56)	0.00%
12820 535245 Grounds Improvements	\$	-	\$	-	\$	-	\$	31.92	\$	(31.92)	0.00%
<b>TOTAL Hwy 16 Landing</b>	\$	-	\$	-	\$	-	\$	<b>1,209.17</b>	\$	<b>(1,209.17)</b>	<b>0.00%</b>

**12821 Hwy K Wayside**

12821 511210 Wages-Regular	\$	-	\$	-	\$	-	\$	40.99	\$	(40.99)	0.00%
12821 512141 Social Security	\$	-	\$	-	\$	-	\$	3.02	\$	(3.02)	0.00%
12821 512142 Retirement (Employer)	\$	-	\$	-	\$	-	\$	2.66	\$	(2.66)	0.00%
12821 512144 Health Insurance	\$	-	\$	-	\$	-	\$	14.93	\$	(14.93)	0.00%
12821 512145 Life Insurance	\$	-	\$	-	\$	-	\$	0.04	\$	(0.04)	0.00%
12821 512151 HSA Contribution	\$	-	\$	-	\$	-	\$	9.62	\$	(9.62)	0.00%
<b>TOTAL Hwy K Wayside</b>	\$	-	\$	-	\$	-	\$	<b>71.26</b>	\$	<b>(71.26)</b>	<b>0.00%</b>

**12822 Indian Mounds Park**

12822 511210 Wages-Regular	\$	-	\$	-	\$	-	\$	673.93	\$	(673.93)	0.00%
12822 511240 Wages-Temporary	\$	-	\$	-	\$	-	\$	198.75	\$	(198.75)	0.00%
12822 512141 Social Security	\$	-	\$	-	\$	-	\$	66.36	\$	(66.36)	0.00%
12822 512142 Retirement (Employer)	\$	-	\$	-	\$	-	\$	25.23	\$	(25.23)	0.00%
12822 512144 Health Insurance	\$	-	\$	-	\$	-	\$	20.37	\$	(20.37)	0.00%
12822 512145 Life Insurance	\$	-	\$	-	\$	-	\$	0.17	\$	(0.17)	0.00%
12822 512173 Dental Insurance	\$	-	\$	-	\$	-	\$	7.11	\$	(7.11)	0.00%
12822 591519 Other Insurance	\$	-	\$	-	\$	-	\$	8.14	\$	(8.14)	0.00%
<b>TOTAL Indian Mounds Park</b>	\$	-	\$	-	\$	-	\$	<b>1,000.06</b>	\$	<b>(1,000.06)</b>	<b>0.00%</b>

**12823 Joy County Park**

12823 511210 Wages-Regular	\$	-	\$	-	\$	-	\$	57.87	\$	(57.87)	0.00%
12823 512141 Social Security	\$	-	\$	-	\$	-	\$	4.26	\$	(4.26)	0.00%
12823 512142 Retirement (Employer)	\$	-	\$	-	\$	-	\$	3.48	\$	(3.48)	0.00%
12823 512144 Health Insurance	\$	-	\$	-	\$	-	\$	34.33	\$	(34.33)	0.00%
12823 512145 Life Insurance	\$	-	\$	-	\$	-	\$	0.06	\$	(0.06)	0.00%
12823 512151 HSA Contribution	\$	-	\$	-	\$	-	\$	16.39	\$	(16.39)	0.00%
12823 591519 Other Insurance	\$	-	\$	-	\$	-	\$	1.76	\$	(1.76)	0.00%
<b>TOTAL Joy County Park</b>	\$	-	\$	-	\$	-	\$	<b>118.15</b>	\$	<b>(118.15)</b>	<b>0.00%</b>

**12824 Kanow County Park**

12824 457017 Park Shelter Rental Fees	\$	-	\$	-	\$	-	\$	(61.61)	\$	61.61	0.00%
12824 457019 Park Shelter Deposits	\$	-	\$	-	\$	-	\$	(100.00)	\$	100.00	0.00%
12824 511210 Wages-Regular	\$	-	\$	-	\$	-	\$	2,345.54	\$	(2,345.54)	0.00%
12824 511240 Wages-Temporary	\$	-	\$	-	\$	-	\$	97.50	\$	(97.50)	0.00%
12824 512141 Social Security	\$	-	\$	-	\$	-	\$	185.27	\$	(185.27)	0.00%
12824 512142 Retirement (Employer)	\$	-	\$	-	\$	-	\$	96.86	\$	(96.86)	0.00%
12824 512144 Health Insurance	\$	-	\$	-	\$	-	\$	242.48	\$	(242.48)	0.00%
12824 512145 Life Insurance	\$	-	\$	-	\$	-	\$	0.53	\$	(0.53)	0.00%
12824 512151 HSA Contribution	\$	-	\$	-	\$	-	\$	5.83	\$	(5.83)	0.00%
12824 512173 Dental Insurance	\$	-	\$	-	\$	-	\$	26.66	\$	(26.66)	0.00%
12824 521219 Other Professional Serv	\$	-	\$	-	\$	-	\$	93.75	\$	(93.75)	0.00%
12824 533222 Electric	\$	-	\$	-	\$	-	\$	134.43	\$	(134.43)	0.00%
12824 535232 Graveling	\$	-	\$	-	\$	-	\$	52.79	\$	(52.79)	0.00%
12824 535245 Grounds Improvements	\$	-	\$	-	\$	-	\$	3.54	\$	(3.54)	0.00%
12824 535247 Building Repair & Maint	\$	-	\$	-	\$	-	\$	106.47	\$	(106.47)	0.00%
12824 591519 Other Insurance	\$	-	\$	-	\$	-	\$	83.27	\$	(83.27)	0.00%
<b>TOTAL Kanow County Park</b>	\$	-	\$	-	\$	-	\$	<b>3,313.31</b>	\$	<b>(3,313.31)</b>	<b>0.00%</b>

**12825 Pohlman County Park**

12825 511210 Wages-Regular	\$	-	\$	-	\$	-	\$	1,474.67	\$	(1,474.67)	0.00%
12825 511240 Wages-Temporary	\$	-	\$	-	\$	-	\$	108.75	\$	(108.75)	0.00%
12825 512141 Social Security	\$	-	\$	-	\$	-	\$	120.06	\$	(120.06)	0.00%
12825 512142 Retirement (Employer)	\$	-	\$	-	\$	-	\$	62.59	\$	(62.59)	0.00%
12825 512144 Health Insurance	\$	-	\$	-	\$	-	\$	84.15	\$	(84.15)	0.00%
12825 512145 Life Insurance	\$	-	\$	-	\$	-	\$	0.49	\$	(0.49)	0.00%
12825 512151 HSA Contribution	\$	-	\$	-	\$	-	\$	13.46	\$	(13.46)	0.00%
12825 512173 Dental Insurance	\$	-	\$	-	\$	-	\$	14.52	\$	(14.52)	0.00%
12825 591519 Other Insurance	\$	-	\$	-	\$	-	\$	63.69	\$	(63.69)	0.00%
<b>TOTAL Pohlman County Park</b>	\$	-	\$	-	\$	-	\$	<b>1,942.38</b>	\$	<b>(1,942.38)</b>	<b>0.00%</b>

**12826 Rock Lake County Park**

12826 457017 Park Shelter Rental Fees	\$	-	\$	-	\$	-	\$	(1,417.38)	\$	1,417.38	0.00%
12826 457019 Park Shelter Deposits	\$	-	\$	-	\$	-	\$	(400.00)	\$	400.00	0.00%
12826 511210 Wages-Regular	\$	-	\$	-	\$	-	\$	3,673.53	\$	(3,673.53)	0.00%
12826 511220 Wages-Overtime	\$	-	\$	-	\$	-	\$	92.26	\$	(92.26)	0.00%
12826 511240 Wages-Temporary	\$	-	\$	-	\$	-	\$	237.62	\$	(237.62)	0.00%
12826 512141 Social Security	\$	-	\$	-	\$	-	\$	304.32	\$	(304.32)	0.00%
12826 512142 Retirement (Employer)	\$	-	\$	-	\$	-	\$	164.25	\$	(164.25)	0.00%
12826 512144 Health Insurance	\$	-	\$	-	\$	-	\$	243.13	\$	(243.13)	0.00%
12826 512145 Life Insurance	\$	-	\$	-	\$	-	\$	1.58	\$	(1.58)	0.00%
12826 512151 HSA Contribution	\$	-	\$	-	\$	-	\$	19.27	\$	(19.27)	0.00%
12826 512173 Dental Insurance	\$	-	\$	-	\$	-	\$	25.79	\$	(25.79)	0.00%
12826 521219 Other Professional Serv	\$	-	\$	-	\$	-	\$	228.75	\$	(228.75)	0.00%
12826 533222 Electric	\$	-	\$	-	\$	-	\$	416.72	\$	(416.72)	0.00%
12826 535245 Grounds Improvements	\$	-	\$	-	\$	-	\$	1,754.60	\$	(1,754.60)	0.00%
12826 591519 Other Insurance	\$	-	\$	-	\$	-	\$	202.73	\$	(202.73)	0.00%
12826 594950 Operating Reserve	\$	-	\$	500.00	\$	500.00	\$	-	\$	500.00	0.00%
12826 699700 Resv Applied Operating	\$	-	\$	(500.00)	\$	(500.00)	\$	-	\$	(500.00)	0.00%
<b>TOTAL Rock Lake County Park</b>	\$	-	\$	-	\$	-	\$	<b>5,547.17</b>	\$	<b>(5,547.17)</b>	<b>0.00%</b>

**12827 Rock River County Park**

12827 457017 Park Shelter Rental Fees	\$	-	\$	-	\$	-	\$	(194.07)	\$	194.07	0.00%
12827 457019 Park Shelter Deposits	\$	-	\$	-	\$	-	\$	(200.00)	\$	200.00	0.00%
12827 485200 Donations Restricted	\$	-	\$	-	\$	-	\$	(40.00)	\$	40.00	0.00%
12827 511210 Wages-Regular	\$	-	\$	-	\$	-	\$	1,677.32	\$	(1,677.32)	0.00%

12827 511240 Wages-Temporary	\$	-	\$	-	\$	-	\$	117.43	\$	(117.43)	0.00%
12827 512141 Social Security	\$	-	\$	-	\$	-	\$	136.11	\$	(136.11)	0.00%
12827 512142 Retirement (Employer)	\$	-	\$	-	\$	-	\$	77.07	\$	(77.07)	0.00%
12827 512144 Health Insurance	\$	-	\$	-	\$	-	\$	132.98	\$	(132.98)	0.00%
12827 512145 Life Insurance	\$	-	\$	-	\$	-	\$	0.50	\$	(0.50)	0.00%
12827 512151 HSA Contribution	\$	-	\$	-	\$	-	\$	6.78	\$	(6.78)	0.00%
12827 512173 Dental Insurance	\$	-	\$	-	\$	-	\$	20.09	\$	(20.09)	0.00%
12827 535245 Grounds Improvements	\$	-	\$	-	\$	-	\$	200.06	\$	(200.06)	0.00%
12827 535247 Building Repair & Maint	\$	-	\$	-	\$	-	\$	52.69	\$	(52.69)	0.00%
12827 591519 Other Insurance	\$	-	\$	-	\$	-	\$	55.11	\$	(55.11)	0.00%
<b>TOTAL Rock River County Park</b>	\$	-	\$	-	\$	-	\$	<b>2,042.07</b>	\$	<b>(2,042.07)</b>	<b>0.00%</b>

**12828 Rome Pond County Park**

12828 511210 Wages-Regular	\$	-	\$	-	\$	-	\$	1,026.14	\$	(1,026.14)	0.00%
12828 511220 Wages-Overtime	\$	-	\$	-	\$	-	\$	11.25	\$	(11.25)	0.00%
12828 511240 Wages-Temporary	\$	-	\$	-	\$	-	\$	60.39	\$	(60.39)	0.00%
12828 512141 Social Security	\$	-	\$	-	\$	-	\$	83.31	\$	(83.31)	0.00%
12828 512142 Retirement (Employer)	\$	-	\$	-	\$	-	\$	43.22	\$	(43.22)	0.00%
12828 512144 Health Insurance	\$	-	\$	-	\$	-	\$	49.87	\$	(49.87)	0.00%
12828 512145 Life Insurance	\$	-	\$	-	\$	-	\$	0.19	\$	(0.19)	0.00%
12828 512151 HSA Contribution	\$	-	\$	-	\$	-	\$	4.81	\$	(4.81)	0.00%
12828 512173 Dental Insurance	\$	-	\$	-	\$	-	\$	11.47	\$	(11.47)	0.00%
12828 591519 Other Insurance	\$	-	\$	-	\$	-	\$	52.91	\$	(52.91)	0.00%
<b>TOTAL Rome Pond County Park</b>	\$	-	\$	-	\$	-	\$	<b>1,343.56</b>	\$	<b>(1,343.56)</b>	<b>0.00%</b>

**12829 Welcome Travelers County Park**

12829 457017 Park Shelter Rental Fees	\$	-	\$	-	\$	-	\$	(534.72)	\$	534.72	0.00%
12829 457019 Park Shelter Deposits	\$	-	\$	-	\$	-	\$	(200.00)	\$	200.00	0.00%
12829 511210 Wages-Regular	\$	-	\$	-	\$	-	\$	1,552.10	\$	(1,552.10)	0.00%
12829 511240 Wages-Temporary	\$	-	\$	-	\$	-	\$	232.50	\$	(232.50)	0.00%
12829 512141 Social Security	\$	-	\$	-	\$	-	\$	135.61	\$	(135.61)	0.00%
12829 512142 Retirement (Employer)	\$	-	\$	-	\$	-	\$	58.72	\$	(58.72)	0.00%
12829 512144 Health Insurance	\$	-	\$	-	\$	-	\$	38.23	\$	(38.23)	0.00%
12829 512145 Life Insurance	\$	-	\$	-	\$	-	\$	0.32	\$	(0.32)	0.00%
12829 512151 HSA Contribution	\$	-	\$	-	\$	-	\$	1.92	\$	(1.92)	0.00%
12829 512173 Dental Insurance	\$	-	\$	-	\$	-	\$	13.64	\$	(13.64)	0.00%
12829 521219 Other Professional Serv	\$	-	\$	-	\$	-	\$	30.00	\$	(30.00)	0.00%
12829 591519 Other Insurance	\$	-	\$	-	\$	-	\$	63.91	\$	(63.91)	0.00%
<b>TOTAL Welcome Travelers County</b>	\$	-	\$	-	\$	-	\$	<b>1,392.23</b>	\$	<b>(1,392.23)</b>	<b>0.00%</b>

**12830 Boat Launches**

12830 451038 Daily Permit Fees	\$	-	\$	-	\$	-	\$	(579.86)	\$	579.86	0.00%
12830 451039 Annual Permit Fees	\$	-	\$	-	\$	-	\$	(388.27)	\$	388.27	0.00%
12830 531313 Printing & Duplicating	\$	-	\$	-	\$	-	\$	360.93	\$	(360.93)	0.00%
<b>TOTAL Boat Launches</b>	\$	-	\$	-	\$	-	\$	<b>(607.20)</b>	\$	<b>607.20</b>	<b>0.00%</b>

**TOTAL General Fund** \$ 2.00 \$ 67,507.98 \$ 67,507.98 \$ 529,088.10 \$ (2,253,742.55) 783.70%

**TOTAL REVENUES** \$ (1,563,082.00) \$ (2,699,551.81) \$ (4,262,634.75) \$ (607,392.16) \$ (3,655,242.59)

**TOTAL EXPENSES** \$ 1,563,084.00 \$ 2,767,059.79 \$ 4,330,142.73 \$ 1,136,480.26 \$ 1,401,500.04

**GRAND TOTAL** \$ 2.00 \$ 67,507.98 \$ 67,507.98 \$ 529,088.10 \$ (2,253,742.55) 783.70%

Historic Sites Preservation Council Minutes  
Jefferson County

Videoconference or  
Jefferson County Courthouse  
311 S. Center Avenue  
*Videoconference OR Courthouse, Room 202*  
Jefferson, WI 53549

Topic: Historic Sites Preservation Council  
Time: August 10, 2022 08:30 AM Central Time (US and Canada)

Join Zoom Meeting  
<https://us06web.zoom.us/j/82800249230?pwd=NEV1RkczcURvSmZjTXh3OFVVdEdwUT09>

Meeting ID: 828 0024 9230  
Passcode: 987795

Dial by your location: 1 312 626 6799 US (Chicago)

Council Members: Anita Martin, Joan Callan, Kathy Marr, Steve Mode, Robin Untz

1. **Call to order**  
Untz called the meeting to order at 8:30 am
2. **Roll call**  
Present: Martin, Callan, Marr (remote), Mode, Untz  
Staff Present: Truman, Kokkonen
3. **Certification of compliance with open meetings law**  
Truman certified compliance
4. **Review of agenda**  
Agenda approved as written
5. **Public comment (Members of the public who wish to address the Council must register their request at this time)**  
No public comment
6. **Approval of minutes from the June 8, 2022 meeting**  
Martin/Mode motion to approved the June 8, 2022 minutes. Motion passes 5/0.
7. **Communications**  
Kokkonen presented the Council with a document that was found: ***Fort Atkinson "How Will We Know It's Us Without our Past" booklet in archives, study 1980***  
Properties listed in this document may potentially be used in the Historical Property listings.
8. **Review of Web Updates**  
No new web updates
9. **Discussion on Story Maps/GIS web Mapping**  
Kokkonen - Have spread sheet with address listing and attributes. Would like to use that listing as a

starting point for the map. Need photos and info paragraphs for each site.  
Committee will get list from State/National Historic and submit a table to Gerry for the first map layer  
Truman will send ESRI Story Map links to the Council for page layout options.  
No action taken

**10. Discussion on Historic Sites Application Form and Submittal/Nomination Process**

Truman presented the application form, Mode tested it.  
Truman will send a request to make form link live.  
Truman will check with Seamless Docs for a few formatting improvements  
Truman will work with Corp Counsel on Information distribution and review process when applicants apply for Historical Designation consideration

**11. Review and Discussion on Historic Sites Preservation Council Ordinance**

Truman – provided the Ordinance for Council review. The ordinance spells out purpose, limitations, criteria for designations.  
No action taken.

**12. Discussion and Possible Action on Heirloom Apples and other Potential Historic Properties**

Agenda item is location specific, and will be temporarily removed until the Council is ready to act on this site.  
No action taken

**13. Next Scheduled Meetings per the 2022 Proposed Meeting Schedule:**

- a. October 12, 2022
- b. December 14, 2022

**14. Potential agenda items for Council's next meeting**

Map  
Form Updates  
Review test applications

**15. Adjourn**

Mode/Callan motion to adjourn at 9:23 am. Motion passes 5/0.

Respectfully Submitted,

Mary S. Truman  
Adv. Program Assistant, Jefferson County Parks